



www.icecompanies.com



Operator & Parts Manual

Automatic Scrubber



**i20NB
i20NBT
i20NBT-OB
i24BT**

8130002
REV.07(03-2016)

INTERNATIONAL CLEANING EQUIPMENT



READ OPERATOR MANUAL CAREFULLY!

IMPORTANT: To ensure full warranty protection, please fill out & return your warranty card.

Please fill out at time of installation for future reference.

Model No. _____

Serial No. _____

Machine Options _____

Sales Rep. _____

Sales Rep. Phone No. _____

Customer ID Number _____

Installation Date _____

HOW TO ORDER PARTS

Only use ICE Company supplied or equivalent parts. Parts and supplies may be ordered online, by phone, by fax or by mail.

1. Identify the machine model.
2. Identify the machine serial number from the data label.
3. Ensure the proper serial number is used from the parts list.
4. Identify the part number and quantity.
Do not order by page or reference numbers.
5. Provide your name, company name, customer ID number, billing and shipping address, phone number and purchase order number.



PROTECT THE ENVIRONMENT

Please dispose of packaging materials, old machine components such as batteries, hazardous fluids, including antifreeze and oil, in an environmentally safe way according to local waste disposal regulations.



Always remember to recycle.

International Cleaning Equipment

XiangShi Road LiaoBu DongGuan GuangDong China

Tel: 0769 - 81850061

Fax: 0769 - 81850001

Specifications and parts are subject to change without notice.

TABLE OF CONTENTS / 目录

SAFETY PRECAUTIONS.....	4
MACHINE COMPONENTS.....	5
PANEL COMPONENTS.....	6
MACHINE SETUP & INSTALLATION.....	7
MACHINE OPERATION.....	8
WHILE OPERATING MACHINE.....	8
TANK DRAINING.....	9
BATTERY CHARGING.....	9
PREVENTATIVE MAINTENANCE.....	10
FAULT CODE & SOLUTION.....	11
BASIC TROUBLESHOOTING.....	12
TECHNICAL SPECIFICATION.....	13
PARTS LIST/ 零件清单	14-46
WEAR AND TEAR PARTS/ 易损件清单	47
安全预防	48
机器组件	49
面板组件	50
机器调试与安装	51
机器操作	51
机器操作过程中	52
水箱排水	52
电瓶充电	52
维护与保养	53
故障代码及解决方法	54
故障排除	55
技术参数	56
WIRING DIAGRAM / 电路图	57-58

SAFETY PRECAUTIONS

This machine is intended for commercial use. It is designed exclusively to scrub hard floors in an indoor environment and is not constructed for any other use. Only use recommended accessories.

All operators shall read, understand and exercise the following safety precautions:

1. Do not operate machine:

- Unless trained and authorized.
- Unless you have read and understand the operators manual.
- In flammable or explosive areas.
- If not in proper operating condition.
- In outdoors areas.

2. Before starting machine:

- Make sure all safety devices are in place and operate properly.

3. When using machine:

- Go slow on inclines and slippery surfaces.
- Follow all safety guidelines.
- Be very careful when using the machine in reverse.
- Reduce speed when turning.
- Report and fix any damage to machine prior to operating it.
- Never allow children to play on or around.
- Do not operate on inclines that exceed 5% (3°).


4. Before leaving or servicing machine:

- Stop on level surface.
- Turn off machine.

5. When servicing machine:

- Read operators manual thoroughly prior to operating or servicing this machine.
- Use manufacturer supplied or approved replacement parts.
- Secure machine with wheel blocks prior to jacking the machine up.
- Use approved jack or hoist to safely elevate the machine.
- Disconnect batteries prior to working on machine.
- Wear gloves when handling batteries or battery cables.

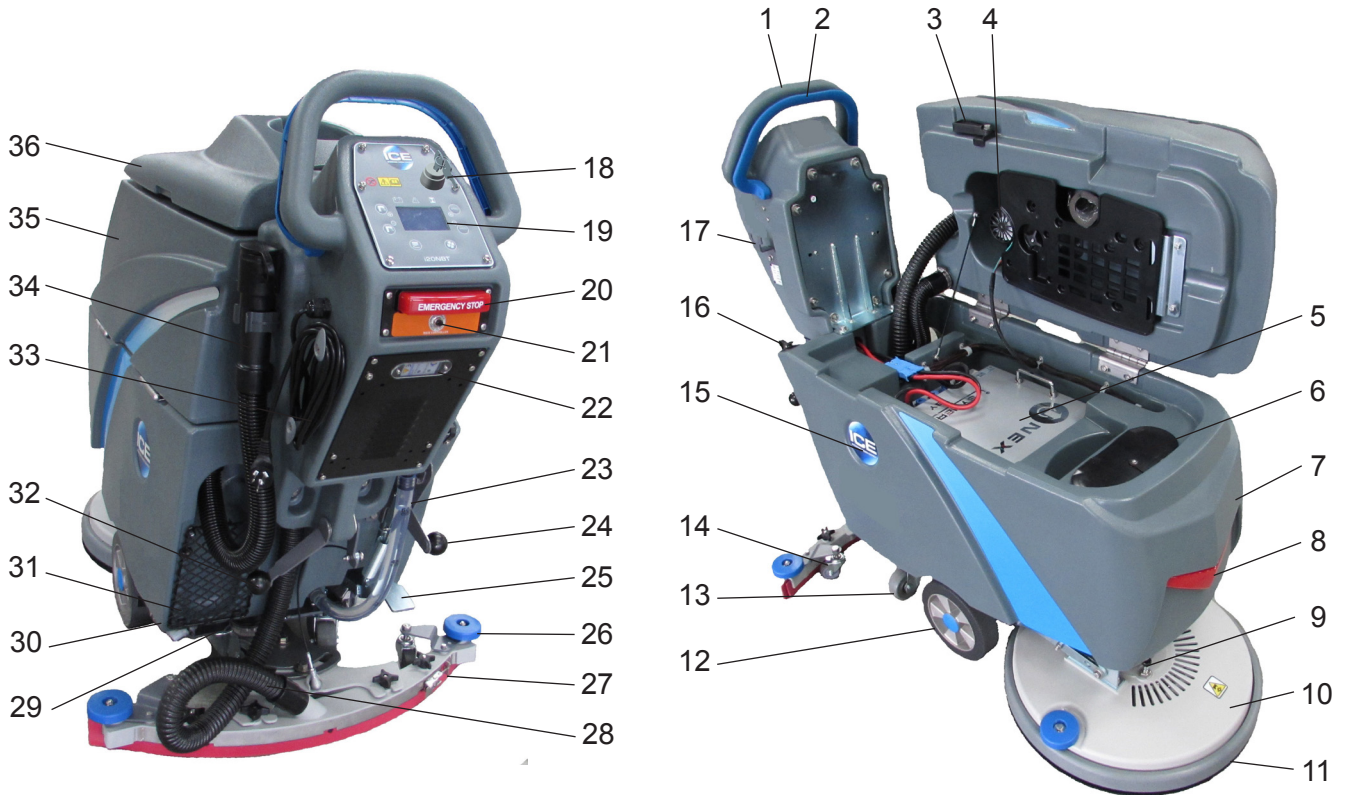
- Avoid any contact with battery acid
- Avoid moving parts. Do not wear loose fitting clothing while servicing machine.

 **WARNING: Batteries emit hydrogen gas. Explosion or fire can result from hydrogen gas. Keep sparks and open flames away! Keep battery compartment open when charging.**

 **WARNING: Flammable materials can cause an explosion or fire. Do not use flammable materials in tanks.**

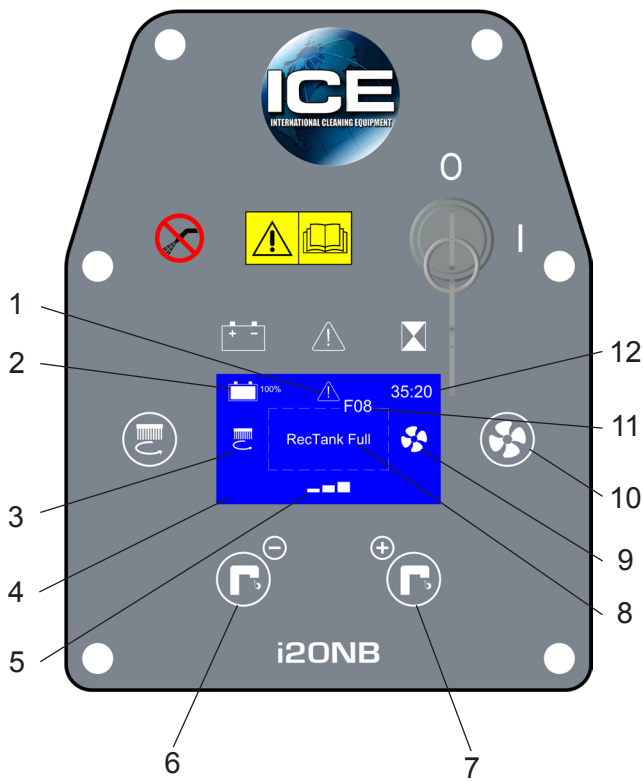
 **WARNING: Flammable materials or reactive metals can cause explosion or fire. Do not pick up.**

MACHINE COMPONENTS



- | | |
|---|--|
| 1. Control Handle | 19. Control panel (see Panel components) |
| 2. Control Handle Start Bail | 20. Emergency Stop Button (Drive Models) |
| 3. Recovery Tank Support Stand | 21. Main controller breaker |
| 4. Vacuum Motor, 24VDC | 22. On-board battery charger / Window |
| 5. Batteries | 23. Solution Tank Level / Drain Hose |
| 6. Bucket Fill Port/ Clean-Out Port | 24. Heavy Down Pressure Lever |
| 7. Solution Tank | 25. Scrub Head Lift Pedal |
| 8. LED Light | 26. Bumper Rollers |
| 9. Motor Hub Lock Pin (Disk Models) | 27. Squeegee Assembly |
| 10. Scrub Head Assembly | 28. Squeegee Vacuum Hose |
| 11. Scrub Head Skirt | 29. Filter Assembly |
| 12. Wheels, 8 Inch | 30. Ball Valve |
| 13. Caster, 3.15 Inch | 31. Cargo Mesh Bag |
| 14. Caster, 2 Inch, Squeegee Blade Adjustment | 32. Squeegee Lift Lever |
| 15. ICE Logo | 33. Power cord, on-board Battery charger |
| 16. Hose Fill-Port | 34. Recovery Tank Drain Hose |
| 17. Squeegee Storage Bracket | 35. Recovery Tank |
| 18. Main Power Key Switch | 36. Recovery Tank Cover |

PANEL COMPONENTS



- 1. Fault indicator
- 2. Battery meter
- 3. Brush motor indicator
- 4. LED display screen
- 5. Solution flow indicator
- 6. Solution flow control button (-)
- 7. Solution flow control button (+)
- 8. Fault message display area

- 9. Vacuum motor indicator
- 10. Vacuum motor switch
- 11. Fault code
- 12. Timer
- 13. Speed control button (-)
- 14. Speed indicator
- 15. Speed control button (+)

MACHINE SET UP & INSTALLATION

UNCRATING MACHINE

Be sure and check packing carton for any damage. Immediately report any damage to carrier. Check the contents of package to ensure that the following items are included:

- Machine
- 2-12V Batteries
- Squeegee assembly
- Battery Charger
- Pad Driver
- Brush

INSTALLING BATTERIES

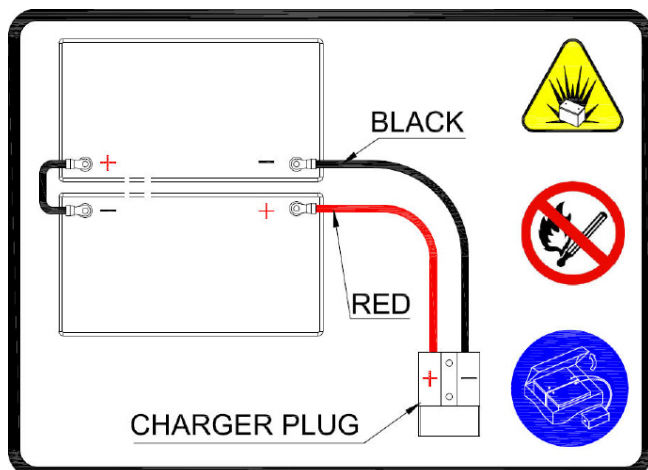
The batteries are already in the machine upon delivery; However you will need to connect the cables to the battery posts.

⚠ WARNING: Batteries emit hydrogen gas. Explosion or fire can result from hydrogen gas. Keep sparks and open flames away! Keep battery compartment open when charging.

1. Turn the Main power key switch off.
2. Open recovery tank to gain access to battery compartment.
3. Carefully place the two batteries into the compartment as shown in figure below. Place the battery brace at the rear of the two batteries.

DO NOT DROP BATTERIES INTO COMPARTMENT!

4. Connect battery cables to posts in numbered order as shown in drawing below.
RED to POSITIVE and BLACK to NEGATIVE.



MACHINE SET UP

PRE-OPERATION CHECKS

1. Sweep or dust mop the surface to be cleaned.
2. Check battery meter to make sure batteries are fully charged. (See BATTERY CHARGING)
3. Check that squeegee is properly installed.
4. Check that brush / pad is properly installed.

INSTALLING PAD DRIVER OR BRUSH

1. Ensure that the machine is turned off.
2. Step down on the scrub head lift pedal (see machine components, item #25) to raise the scrub head off the floor.
3. If using a Pad Driver, first attach the appropriate pad to the pad driver surface.
4. Turn the brush motor hub until the slot with the spring clip is visible through the scrub head window.
5. Mount the pad driver or brush to the brush motor hub by lining up the three studs with the three holes in the brush motor hub. Once in the holes, rotate the driver toward the spring clip to lock the pad driver into place.
If necessary, press down on the motor hub lock pin (see machine componts, item # 9)to lock motor hub in place.
6. For Orbital head Model i20NBT-OB, you need to attach a rectangular, 20in(508mm)×14in(356mm) Pad to the Orbital Pad driver. align the pad to the Orbital pad driver, press from front-to-back and side to side to alignment.

MOUNTING THE SQUEEGEE ASSEMBLY

1. Lift the squeegee lift lever (see machine components, item #32)to the upward position.
2. Mount the squeegee assembly to the squeegee pivot bracket. make sure the knobs are completely seated into the slots before securing knobs.
3. Connect the vacuum hose to the squeegee assembly. Loop the hose by using the hose clip provided.
4. Check the squeegee blades for proper adjustment.

OPERATOR MANUAL

FILLING THE SOLUTION TANK

The machine is equipped with a hose fill-port (see machine components, item #16) at the rear of the machine, and a bucket fill-port (see machine components, item #6) located under the recovery tank. Before accessing the bucket fill-port make sure that the recovery tank is empty.

Fill the solution tank to the "60L" level on the solution tank sight gauge. When using the bucket fill-port, stop filling when the level reaches the bottom edge of the fill-port.

NOTE: When filling the solution tank with a bucket, make sure that the bucket is clean. Do not use the same bucket for filling and draining the machine.



WARNING: Do not put any flammable materials into solution tank. this can cause an explosion or a fire. Only use recommended cleaning chemicals. Contact your janitorial supply distributor for recommendations on proper chemicals.

MACHINE OPERATION



WARNING: Do not operate machine unless you have read and understand this manual.

1. Lower squeegee assembly to the floor by lowering the squeegee lift lever(see machine components, item #32).
2. Lower the scrub head to the floor by stepping on the scrub head lift pedal(see machine components, item #25).
3. Turn the main power key switch(see machine components, item #18) to the on (I) position.
4. Check the battery meter (see Panel components, item #2), if the battery is very low, there will be a Fault code & message on the LED display screen(see Fault code section), and the Fault indicator will blink continuously accompany an audible alarm. please DO NOT continue to operate the machine and recharge the batteries immediately.
5. Check the solution flow indicator (see Panel components, item #5), press the solution flow control button (see Panel components, item #6, 7) to a desired flow rate.
NOTE: Solution will not begin to flow until the control handle bail is pulled.
6. Turn on the vacuum motor switch(see Panel components, item #10).
7. i20NB: Pull the control handle bail(see machine components, item #2) backwards to start scrubbing by moving the machine forward.

The drive model i20NBT / i24BT: Pull the control handle bail(see machine components, item #2) backwards to start scrubbing. The machine will automatically propel forward. To reverse the drive model, simply push the control handle bail forward. the speed can be adjusted, Adjust the speed control button (see Panel components, item #13,15) to a desired scrubbing speed.

NOTE: 45-60 meters (150-200 ft)per minute is the recommended scrubbing speed.

8. When more brush pressure is needed for heavily soiled areas simply lift the down pressure lever(see machine components, item #24).
9. To stop scrubbing, release the control handle bail, raise the scrub head and the squeegee assembly.

WHILE OPERATING MACHINE



WARNING: Fire Or Explosion Hazard. Do Not Pick Up Flammable Materials Or Reactive Metals.

1. Go slow on inclines and slippery surfaces. Do not operate the machine on inclines that exceed 5% (3°).
2. Do not keep the machine in the same position with pad / brush spinning, keep the machine moving to prevent damage to floor finish.
3. If the squeegee assembly leaves streaks on the floor, raise the squeegee off the floor and wipe the blades down with a damp cloth. Pre-sweep the area to prevent leaving streaks on the floor.
4. Pour a recommended defoamer into the recovery tank if excessive foam appears.



WARNING: Do not allow foam to enter the float shut-off screen, vacuum motor damage will result. Foam will not activate the float shut-off screen.

5. Occasionally check the battery meter(see Panel components, item #2). when the battery is very low, stop scrubbing and recharge the batteries.



WARNING: When battery is very low, do not continue to operate the machine. Battery damage may result.

6. When the solution tank runs empty, raise the brush head off the floor. Keep the squeegee down and continue to vacuum until all the dirty water is picked up.

NOTE: See **TANK DRAINING** section to learn how to drain recovery and solution tanks.

CIRCUIT BREAKER

The machine is equipped with a resettable circuit breaker(see machine components, item #21) to protect the Main controller. If the circuit breaker should trip, it can't be reset immediately. You must first determine what caused the breaker to trip, and allow the Controller to cool down and then you can manually reset the circuit breakers.

NOTE: Contact an Authorized Service center for machine repairs.

HOUR METER

The hour meter (see Panel components, item #12) records the number of total hours the brush motor has been powered on. Use the hour meter to determine when to perform recommended maintenance procedures and to record service history.

TANK DRAINING

1. Turn the machine off on.
2. With the squeegee and scrub head in their "up" position, transport machine to approved area for draining tank(s).

DRAINING THE RECOVERY TANK

Any time scrubbing is completed, or when refilling solution tank, the recovery tank should be drained and cleaned.

⚠ WARNING: If the recovery tank is not drained when the solution tank has been refilled, foam or water may enter the float shut-off screen and cause damage to the vacuum motor.

1. While holding the drain hose (see machine components, item #25) upward, remove the cap and lower hose to drain.
2. Open the recovery tank cover and rinse out the tank. Use a rag to remove any excess dirt.
3. Clean the float shut-off screen and debris tray located in the recovery tank .

DRAINING THE SOLUTION TANK

Any time scrubbing operation is completed, the solution tank should be drained and cleaned.

1. Pull the solution tank level hose(see machine components, item #23) off the hose fitting, this will allow the solution to flow freely into a bucket or floor drain.
2. Remove the cover of the filter assembly(see machine components, item #29) to drain the

solution tank, check the filter screen and clean up it if necessary.

3. Rinse the solution tank with clean water after every use. This will help prevent chemical buildup and clogging of the solution lines.
4. After rinsing out the tank, securely reconnect the tank level hose to the hose fitting, replace the filter assembly cover and be sure the filter screen and the "O" ring is in the correct position.

BATTERY CHARGING

⚠ WARNING: Fire Or Explosion Hazard. Batteries Emit Hydrogen Gas. Keep Sparks and Open Flame Away. Keep Battery Compartment Propped Open When Charging.

NOTE: Use only approved chargers with the following specifications:

- Automatic shut off circuit
 - Deep cycle charging
 - Output current of 10-20 Amps
 - Output voltage of 24 volts
1. Place machine in a well ventilated area.
 2. Turn the machine off.
 3. If charging wet (lead acid) batteries check the fluid level before charging.
 4. Connect the charger's AC power supply cord (see machine components, item #33)to a properly grounded receptacle.
 5. Prop up the recovery tank by the support stand (see machine components, item #3) for ventilation when charging.
 6. The charger will automatically begin to charge and will automatically shut off once the batteries are fully charged.
 7. Upon completion of charging, disconnect the AC power supply cord.

PREVENTATIVE MAINTENANCE

⚠ WARNING: Before performing any maintenance on the machine, be sure that the power is turned off, or the batteries are disconnected!

⚠ WARNING: Repairs are to be completed by Authorized service centers only. Any repairs completed by unauthorized persons will void the warranty.

OPERATOR MANUAL

DAILY MAINTENANCE

1. Remove pad driver/ brush and clean with approved cleaner.
2. Drain recovery and solution tanks completely and rinse out with clean water. Visually check the recovery tank for debris and clean out as necessary.
3. Raise the squeegee assembly off floor and wipe it down with a damp towel. Be sure to store the squeegee in the up position.
4. Remove the float shut-off assembly and rinse it out with clean water.
5. Clean machine with an approved cleaner and a damp towel.
6. Recharge the batteries.
7. Check the condition of the squeegee blade wiping edge, rotate blade if worn.

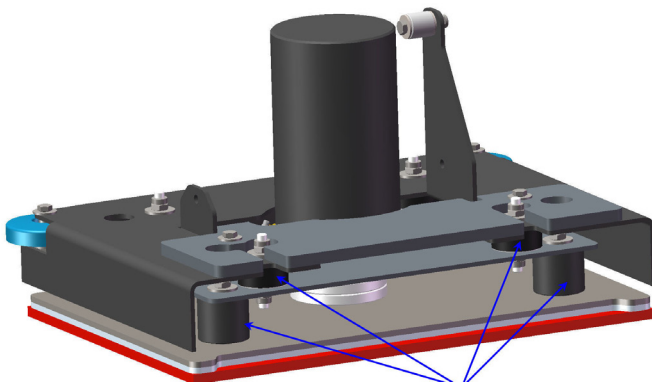
MONTHLY MAINTENANCE

1. Clean the battery tops to prevent corrosion.
2. Check for loose battery cable connections.
3. Inspect and clean the recovery tank cover seal. Replace it if damaged.
4. Lubricate all grease points and pivot points with silicon spray and approved grease.
5. Check the machine for loose nuts and bolts.
6. Check the machine for leaks.

ORBITAL HEAD MAINTENANCE

For Orbital head, you should have checked the eight isolators located in the Orbital head every 300 hours.

1. Using a flashlight, do a visual inspection of the isolators by looking through the opening in the Orbital head and checking for wear or damage to four isolators in the front and four in the rear of the Orbital head. The locations of the isolators are shown below.



ISOLATORS (8)

2. If any of the eight isolators show signs of wear, degradation or damage, contact your local distributor to replace all eight isolators.

MOTOR MAINTENANCE

1. Contact your local Distributor for any motor maintenance.
2. Motor should have the brushes checked every 250 hours. Brushes should be replaced when they are worn to a length of 10 mm or less.

BATTERY MAINTENANCE

! WARNING: Batteries emit hydrogen gas and an explosion or fire can result. Keep sparks and fire away from batteries at all times.

! WARNING: Whenever servicing batteries, be sure to wear protective gloves. Avoid contact with battery acid at all times.

NOTE: For the best machine performance, keep batteries charged at all times. Do not let them sit in a discharged condition.

1. Always follow the battery charging directions as outlined in the BATTERY CHARGING section of this manual.
2. Keep battery tops and terminals free from corrosion. A strong solution of baking soda and water is the best way to keep the batteries corrosion free. **DO NOT ALLOW THE BAKING SODA / WATER SOLUTION TO ENTER THE BATTERY CELLS.**
3. Use a wire brush with the baking soda solution to properly clean the battery posts and connections.
4. Check battery connections for wear and loose terminals. replace if necessary.

MACHINE STORAGE

1. Always store the machine indoors.
2. Always store the machine in a dry area.
3. Always store the machine in its upright position.
4. Always store the machine with the pad driver/ brush raised off the floor.
5. Always store the machine with the squeegee assembly raised off the floor.
6. If storing in an area which may reach freezing temperatures, be sure to drain all fluids from the machine prior to storage. Any damage caused by freezing temperatures will not be covered by the warranty.
7. Drain the recovery tank.
8. Drain the solution tank of all fluid.

FAULT CODE & SOLUTION

The machine is equipped with a LED display screen (see Panel components, item # 4), the LED screen will display the operating hours (see Panel components, item # 12) and the battery level status (see Panel components, item # 2).

When the machine detects a fault, there will be a Fault code (see Panel components, item #11) & Fault message (see Panel components, item #8) display on the LED screen, and the Fault indicator (see Panel components, item #1) will flash continuously, accompany an audible alarm Occasionally.

Once fault occurring, please DO NOT continue operate the machine unless the fault are eliminated. Turn off the machine, then to solve the fault, the fault code & message will be eliminated when machine restart.

If the fault is occurred frequently, or the fault can't be eliminated, please contact ICE service center.

Please refer to the below table to determine the fault cause and the solution.

FAULT CODE	FAULT MESSAGE	MODEL		FAULT CAUSE	SOLUTION
		i20NB	i20NBT i24BT		
F01	Lower Brush Deck	●		Brush deck is off the floor	Release the control handle bail Or Lower the Brush deck
F04	Vac Mtr O.L. RE-START!	●	●	Vacuum motor overload	Turn off the machine,after a moment, RE-START machine
F06	Bru Mtr O.L. RE-START!	●	●	Brush motor overload	
F07	Propel Mtr O.L. RE-START!		●	Propel motor overload	
F08	RecTank Full	●	●	Recovery tank is full Or Bad Solution level sensor	Drain the Recovery tank/Replace the solution level sensor
F10	Batt Low Charge Batt	●	●	Battery is low	Charge the battery
F11	Batt Empty Charge Batt NOW	●	●	Battery is empty	Charge the battery NOW
F12	Brake Wiring Error		●	Bad Brake wiring Bad Brake	Check the brake wiring Replace the Brake assembly
F14	Replace Brake Assy		●	Bad Brake assembly	Replace the brake assembly
F16	Control Unit Overheat! Wait	●	●	Control Unit Overheat	Turn off the machine,after a moment, RE-START machine
F17	Replace Control Unit	●	●	Control Unit Fault	Replace the control unit
F21	Check Vac Mtr	●	●	Bad Vacuum motor or wiring	Check the vacuum motor / Wiring
F22	Check Soln Solenoid	●	●	Solution solenoid wiring fault	Check the wiring & Contactors
F23	Replace Soln solenoid	●	●	Bad Solution solenoid	Replace the solution solenoid
F24	Check Propel Motor		●	Bad propel motor	Check the propel motor / Wiring
F25	Check Brush Motor	●	●	Bad brush motor	Check the brush motor / Wiring
F40	Check Proximity Sw	●	●	Proximity switch fault	Check the Proximity switch
F41	Release Handle	●	●	Operation mistake	Release the control handle bail
F42	Replace Control Unit	●	●	Bad Control Unit	Replace the control unit
F43	Turn Dead Sw Off RE-START!		●	Emergency stop button activated.	Release emergency stop button and restart machine.
F44	Replace Control Unit	●	●	Bad Control Unit	Contact service center, Replace the Control Unit
F45	Return Control Unit	●	●		
F46	Return Control Unit	●	●		
F47	Return Control Unit	●	●		
F48	Return Control Unit	●	●		

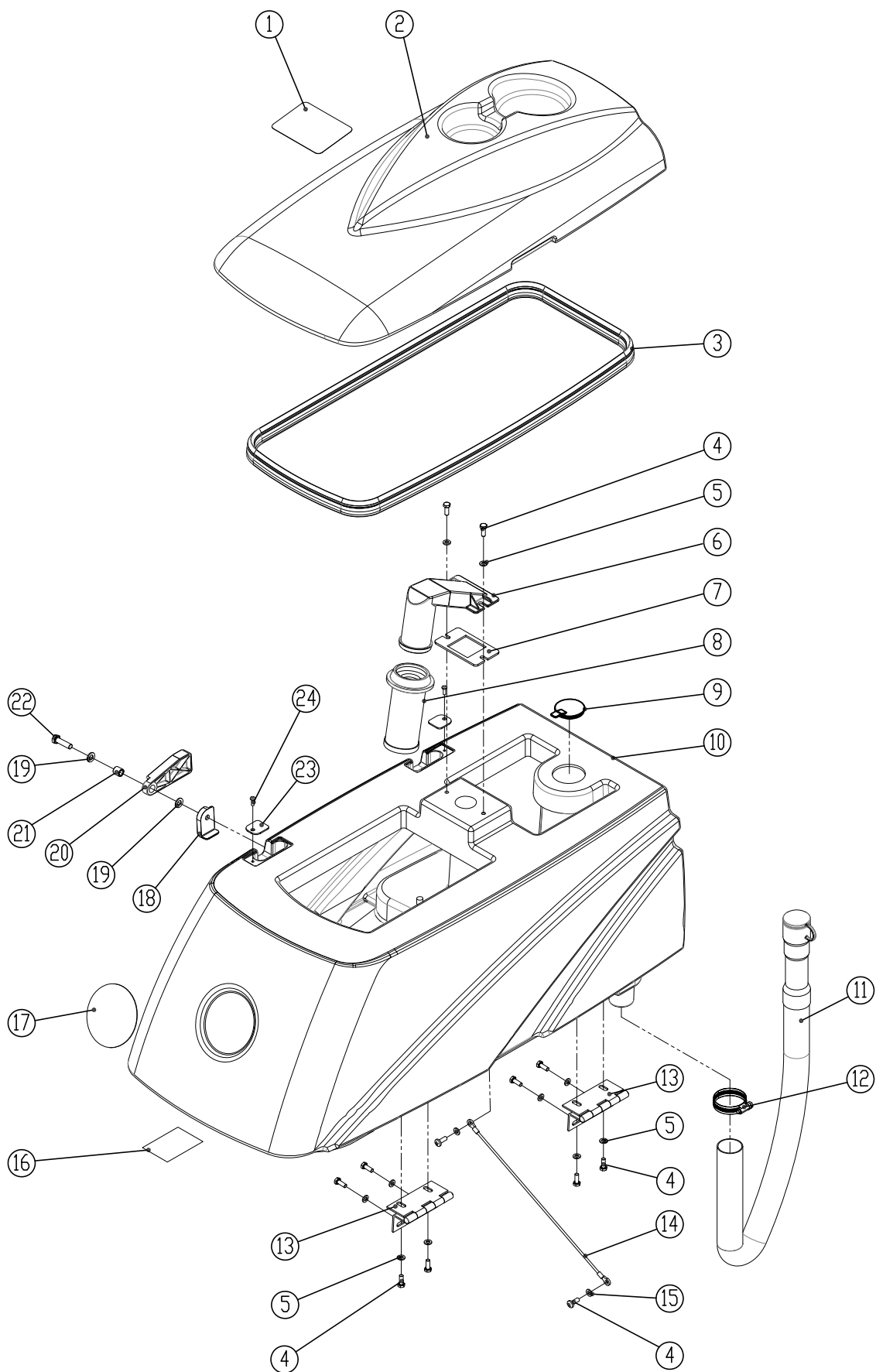
BASIC TROUBLESHOOTING

PROBLEM	CAUSE	SOLUTION
Machine will not operate	Control handle bail not pulled	Pull control handle bail
	Batteries need to be charged	Charge batteries
	Bad batteries	Replace batteries
	Loose batteries connection	Tighten the connector
	Main control unit circuit breaker tripped	Reset main control unit breaker
	Faulty key switch	Contact ICE service center
Brush motor will not operate	Scrub head is raised off floor	Lower scrub head
	Faulty scrub head (up/down)switch	Contact ICE service center
	Faulty control handle bail switch	Contact ICE service center
	Faulty brush motor or wiring	Contact ICE service center
	Worn Motor carbon brushes	Contact ICE service center
Machine does not propel (Drive model)	Faulty transaxle motor or wiring	Contact ICE service center
	Worn Motor carbon brushes	Contact ICE service center
Vacuum motor will not operate	Faulty vacuum motor or wiring	Contact ICE service center
	Worn Motor carbon brushes	Contact ICE service center
Little or no solution flow	Ball valve set too low or shut off	Turn on the ball valve
	Solution flow control knob set too low or shut off	Adjust solution control flow knob
	Clogged solution tank filter or solution hose	Clean solution tank filter or flush out solution hose
	Clogged solution Solenoid valve	Remove valve and clean
Poor water pick up	Recovery tank is full	Drain recovery tank
	Loose drain hose cap	Tighten cap
	Clogged float shut-off screen located in recovery tank	clean screen
	Clogged squeegee assembly	Clean squeegee assembly
	Worn squeegee blades	Replace or rotate squeegee blades
	Incorrect squeegee blade deflection	Adjust squeegee blade height
	Loose vacuum hose connections	Secure hose connections
	Clogged vacuum hose	Remove clogged debris
	Damaged vacuum hose	Replace vacuum hose
	Recovery tank cover not in place	Properly position cover
	Damaged recovery tank cover seal	Replace seal
	Faulty vacuum motor	Contact ICE service center
	Low battery charge	Recharge batteries
Short run time	Low battery charge	Fully recharge batteries
	Defective batteries	Replace batteries
	Faulty battery charger	Repair or replace battery charger
	Down pressure lever is set for extra scrub head pressure	Lower down pressure lever

TECHNICAL SPECIFICATIONS

MODEL	i20NB Brush Assist	i20NBT W/ Drive	i20NBT-OB Orbital head	i24BT Dual disk
DIMENSIONS L	55.7 in / 1,415 mm		53.5 in / 1,360 mm	52.2 in / 1,325 mm
DIMENSIONS W	22 in / 560 mm		22 in / 560 mm	25.6 in / 650 mm
DIMENSIONS H	44.9 in / 1,140 mm		44.9 in / 1,140 mm	44.9 in / 1,140 mm
WEIGHT	210 lbs / 95 Kg	230 lbs / 105 Kg		
WEIGHT with BATTERIES	410 lbs / 185 Kg	440 lbs / 200 Kg		
RECOVERY TANK CAPACITY	17.2 Gal / 65 L			
SOLUTION TANK CAPACITY	15.9 Gal / 60 L			
SQUEEGEE WIDTH	30 in / 762 mm			
CLEANING PATH WIDTH	20 in / 500 mm (Disk)		500 mm / 20 in (20 in x 14 in Pad)	24 in / 600mm
PRODUCTIVITY RATE	19,375 ft ² / 1,800 m ² h	23,680 ft ² / 2,200 m ² h		28,000 ft ² / 2,600m ² h
DRIVE SYSTEM	Brush Assisted	Transaxle, 0.27 hp / 0.2KW		
TRAVEL SPEED, MAXIMUM	N/A	246 ft / Min 75 m / Min		
MINIMUM AISLE TURN	63 in / 1,600 mm			
PAD/BRUSH PRESSURE	65 lbs / 30 Kg Min 100 lbs / 45 Kg Max			
SOLUTION FLOW RATE	0 ~ 0.37 Gal / Min 0 ~ 1,400 ml / Min			
BRUSH MOTOR	0.75hp / 0.55KW 220 RPM		0.75hp / 0.55KW 2,200RPM	0.9hp / 0.68KW 2,000RPM
VIBRATIONS @ CONTROLS	N/A		< 2.5 m / s ² < 8.2 ft / s ²	N/A
VACUUM MOTOR	0.7hp / 0.5KW			
WATER LIFT - AIR FLOW	45 in / 1,143 mm			
BATTERIES	2- 12, 130AH @ 20 hr			
RUN TIME PER CHARGE	3.5 Hours	3 Hours		
VOLTAGE DC	24V			
DECIBEL RATE AT OPERATOR'S EAR, INDOORS	68dB(A)		<70dB(A)	68dB(A)
GRADE LEVEL, MAX	5% (3°)			

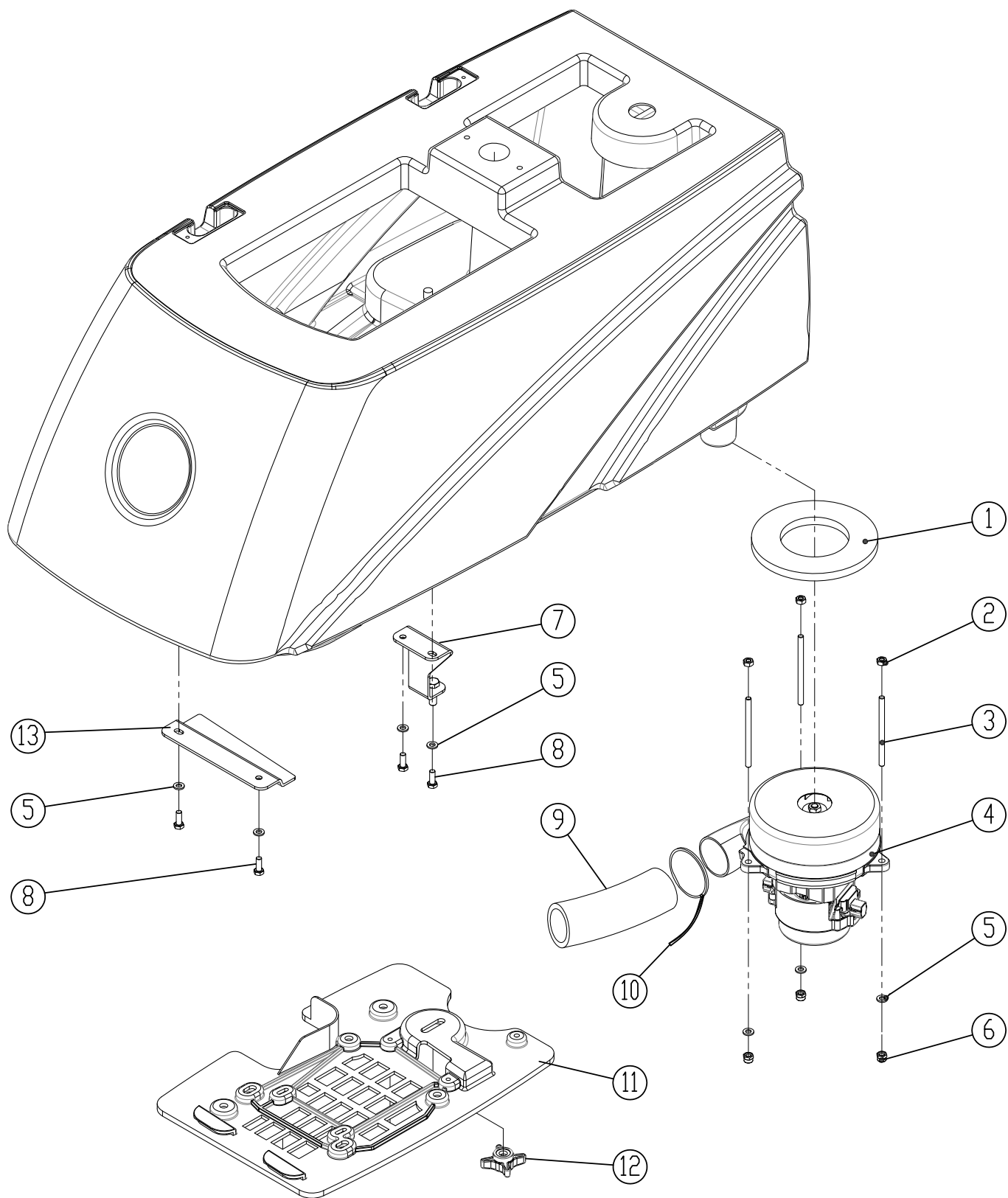
RECOVERY TANK GROUP / 污水箱组件



RECOVERY TANK GROUP / 污水箱组件

DIA NO.	PART NUMBER	DESCRIPTION	零件名称	NO REQ'D
1	8111022	WARNING LABEL	警告贴纸	1
2	8131002	RECOVERY TANK COVER	污水箱盖	1
3	8131005	RECOVERY TANK COVER SEAL	污水箱盖密封条	1
4	1021616	HEX BOLT M6 X 16	六角头螺栓 M6×16	12
5	1421618	FLAT WASHER M6× ϕ 18×1.6	平垫圈 M6× ϕ 18×1.6	10
6	8111014	FLOAT ADAPTER	滤网接头	1
7	8111001	GASKET	密封垫	1
8	8111015	FLOAT, SHUT-OFF	浮球滤网	1
9	8131003	CAP	封堵	1
10	8131001	RECOVERY TANK	污水箱	1
11	8131010	DRAIN HOSE	放污管组件	1
12	1962050	CLAMP	喉箍 27-51mm	1
13	8111300	HINGE ASSEMBLY	铰链组件	2
14	8131020	CABLE	污水箱拉绳	1
15	1421612	FLAT WASHER M6× ϕ 12×1.6	平垫圈 M6× ϕ 12×1.6	2
16	8111024	LABEL, BATTERY INSTALLATION	电瓶连接指示贴纸	1
17	4010316	ICE LOGO	ICE 标牌	1
18	8111008	BRACKET	水箱支撑限位块	1
19	1421816	FLAT WASHER M8× ϕ 16×1.6	平垫圈 M8× ϕ 16×1.6	2
20	8111007	RECOVERY TANK SUPPORT	水箱支撑架	1
21	8115404	SLEEVE, P/M	含油轴承	1
22	1021830	HEX BOLT M8×30	六角头螺栓 M8×30	1
23	8111016	PLATE	小压块	2
24	1221412	SCREW M4×12	十字槽盘头螺钉 M4×12	2

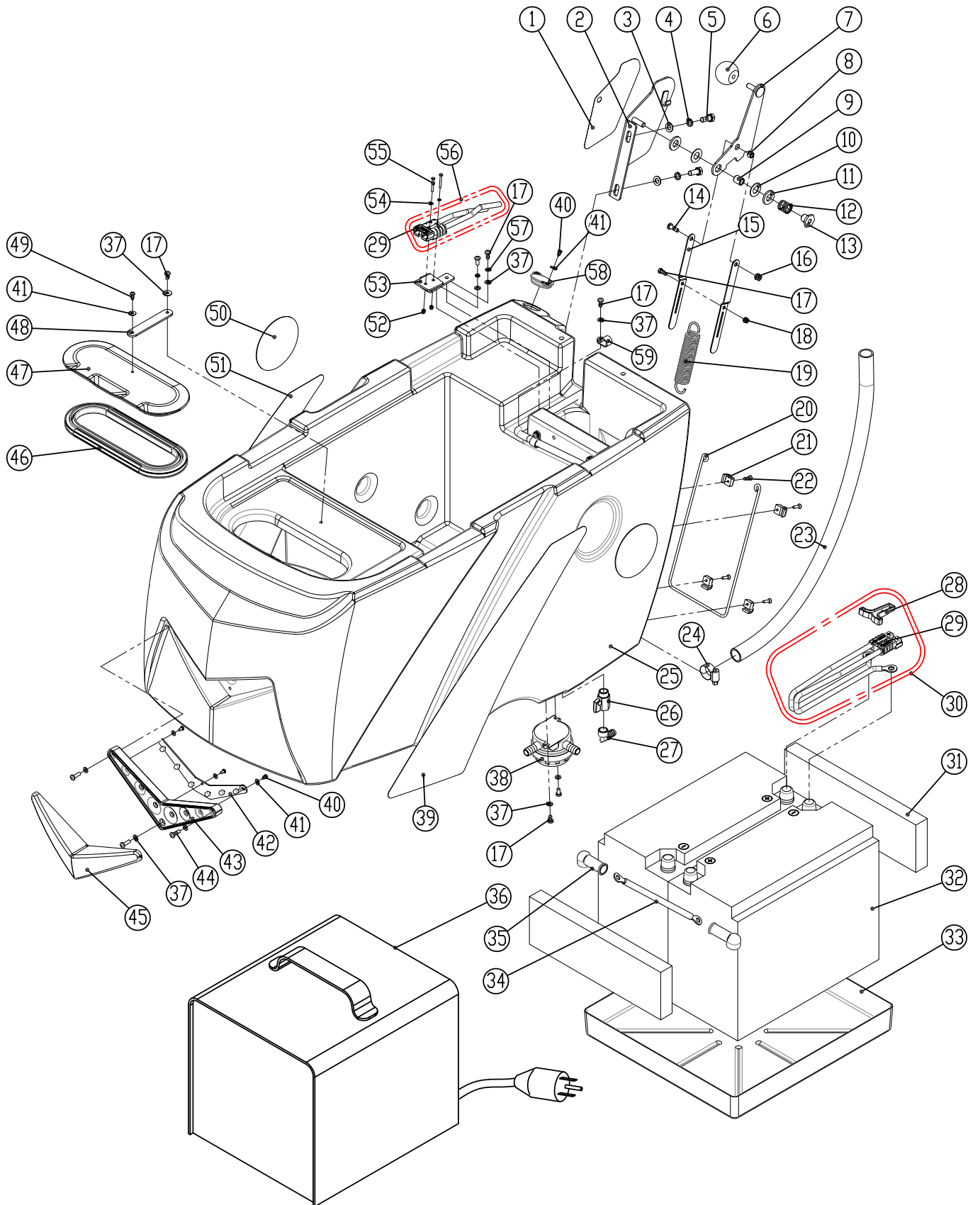
VACUUM FAN GROUP / 吸力泵组件



VACUUM FAN GROUP / 吸力泵组件

DIA NO.	PART NUMBER	DESCRIPTION	零件名称	NO REQ'D
1	8112005	GASKET, VACUUM MOTOR	吸力泵密封垫	1
2	1121605	HEX NUT M6	六角螺母 M6	3
3	8112006	STUD M6×92	双头螺杆 M6×92	3
4	8112100	VACUUM MOTOR , KIT, 24VDC	24VDC 吸力泵套装	1
5	1421612	FLAT WASHER M6× ϕ 12×1.6	平垫圈 M6× ϕ 12×1.6	7
6	1123608	LOCK NUT M6	防松螺母 M6	3
7	8112003	BRACKET	支架	1
8	1021616	HEX BOLT M6×16	六角头螺栓 M6×16	4
9	8132007	MUFFLER, VACUUM MOTOR	消音套	1
10	1914300	TIE, NYLON, 5X300	尼龙扎带 5×300	2
11	8112001	CHARGER COVER	充电器盖板	1
12	8118003	KNOB M8	星形把手 M8	1
13	8112004	BRACKET	充电器盖板支架	1

SOLUTION TANK GROUP / 清水箱组件



SOLUTION TANK GROUP / 清水箱组件

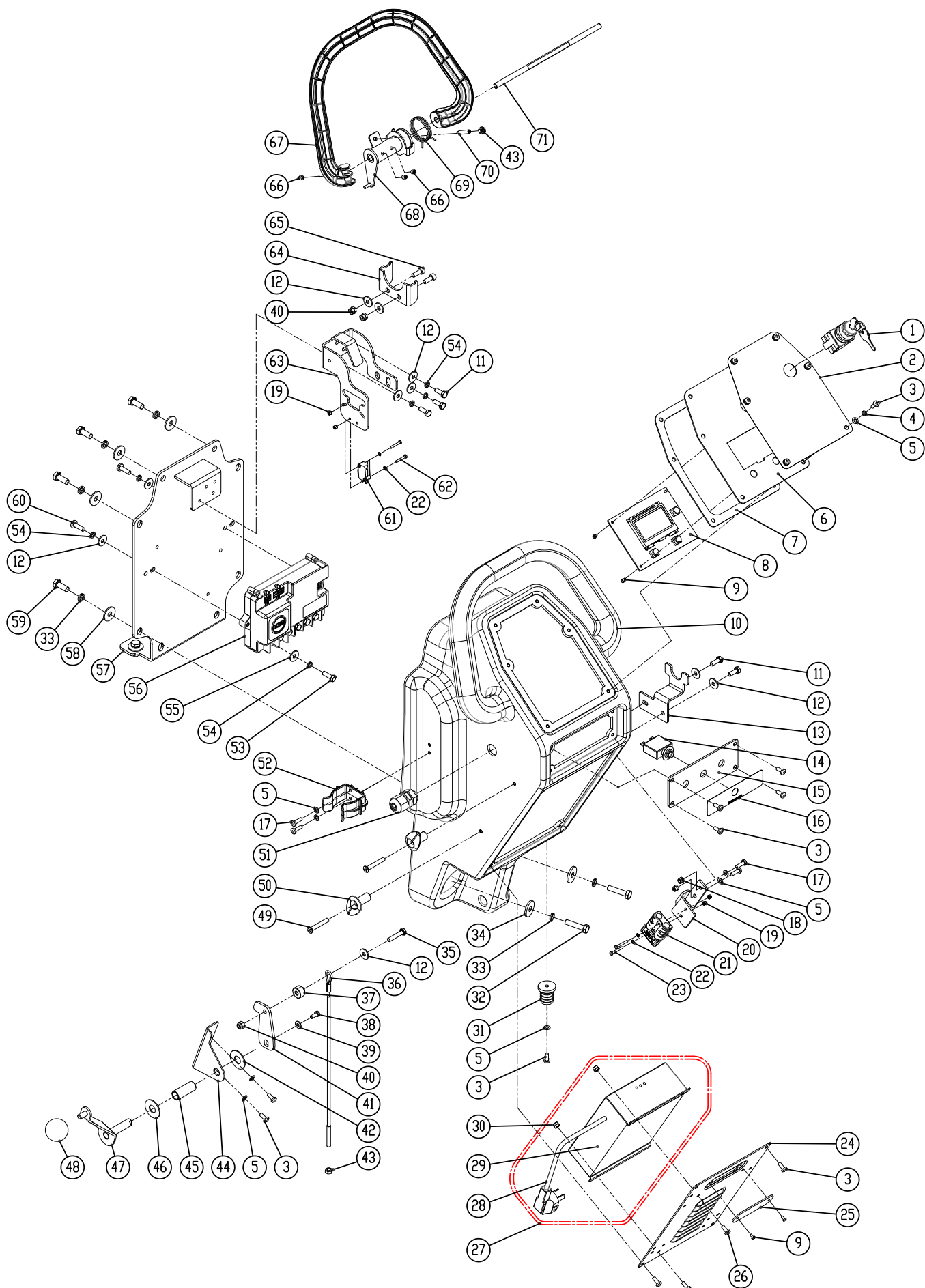
DIA NO.	PART NUMBER	DESCRIPTION	零件名称	NO REQ'D
1	8113115	DOWN PRESSURE LABEL	刷盘加压指示贴纸	1
2	8113101	DOWN PRESSURE LEVER BRACKET	刷盘加压支架	1
3	1421816	FLAT WASHER M8× ϕ 16×1.6	平垫圈 M8× ϕ 16×1.6	2
4	1422821	LOCK WASHER M8	弹簧垫圈 M8	2
5	1021820	HEX BOLT M8×20	六角头螺栓 M8×20	2
6	8113104	BALL KNOB	球形把手	1
7	8113106	DOWN PRESSURE LEVER	刷盘加压拉把	1
8	8113112	BUSHING	轴套	1
9	8113110	SLEEVE, P/M	含油轴承	1
10	8113111	NYLON FLAT WASHER ϕ 12.9× ϕ 25.4×0.8	尼龙平垫圈 ϕ 12.9× ϕ 25.4×0.8	2
11	8113109	THRUST BEARING	含油轴承	2
12	8113114	SPRING	压缩弹簧	1
13	8113107	RETAINER, SPRING	螺母	1
14	8113103	BOLT M6×18	螺栓 M6×18	1
15	8113108	LINK, SPRING	加压联杆	2
	8133108	LINK, SPRING, ORBITAL HEAD MODEL	加压联杆 (i20NBT-OB)	2
16	1123608	LOCK NUT M6	防松螺母 M6	1
17	1221512	SCREW M5×12	十字盘头螺钉 M5×12	15
18	1123507	LOCK NUT M5	防松螺母 M5	1
19	8133113	SPRING	拉伸弹簧	1
20	8133501	CARGO NET	网罩	1
21	8133502	CLAMP	网罩安装压块	4
22	1221412	SCREW M4X12	十字盘头螺钉 M4×12	4
23	8133007	CLEAN TUBING	清水管	1
24	1962025	CLAMP 16-25mm	不锈钢喉箍 16-25mm	1
25	8133001	SOLUTION TANK	清水箱	1
26	8119005	BALL VALVE, G1/2	球阀 G1/2	1
27	8119007	ELBOW G1/2	直角接头 G1/2	1
28	8113021	HANDLE, CONNECTOR	连接器手柄套装 SB50-HDL-RED	1
29	8113020	CONNECTOR	Anderson 连接器 SB50A-RED	2
30	8114731	BATTERY CONNECT CABLE, ASSEMBLY	电瓶连接线组件	1
31	8113013	SPACER, BATTERY	泡棉	2
32	8113011	BATTERY, 12TB115, 115AH, HOPPECKE	电瓶 12TB115, 115AH, 荷贝克	2
	8133010	BATTERY, 6-EVF-100, 110AH, CHILWEE	电瓶 6-EVF-100, 110AH, 超威	2
	8133020	BATTERY, EV12A-A, 120AH, DISCOVER	电瓶 EV12A-A, 120AH, DISCOVER	2

PARTS LIST / 零件清单

SOLUTION TANK GROUP / 清水箱组件

DIA NO.	PART NUMBER	DESCRIPTION	零件名称	NO REQ'D
33	8113012	BATTERY TRAY	电池盒	1
34	8114750	BATTERY CONNECT CABLE, BLACK	黑色电瓶连接线	1
35	8114751	JACKET, BATTERY TERMINAL, BLACK	黑色护套	4
36	8114721	OFF BOARD BATTERY CHARGER(OPTIONAL)	外置式充电器 (选配)	1
37	1421510	FLAT WASHER M5× ϕ 10×1	平垫圈 M5× ϕ 10×1	17
38	8119100	FILTER ASSEMBLY	过滤器组件	1
39	8133025	LABEL, LEFT SIDE	水箱左贴纸	1
40	1321110	SELF-TAPPING SCREW ST3.5 ×10	十字槽盘头自攻螺钉 ST3.5×10	4
41	1421409	FLAT WASHER M4× ϕ 9×0.8	平垫圈 M4× ϕ 9×0.8	5
42	8133610	LED LIGHT, KIT	LED 灯套装	1
43	8133601	LED LIGHT MNTG BASE	LED 灯座	1
44	1221520	SCREW M5X20	十字盘头螺钉 M5×20	3
45	8133602	LED LIGHT COVER	LED 灯座	1
46	8113030	SEAL	密封条	1
47	8113002	COVER	注水孔盖	1
48	8113007	STRAP	橡胶带	1
49	1321213	SELF-TAPPING SCREW ST4.2X13	十字槽盘头自攻螺钉 ST4.2×13	1
50	4010316	ICE Logo	ICE 标牌	2
51	8133026	LABEL, RIGHT SIDE	水箱右贴纸	1
52	1123305	LOCK NUT M3	防松螺母 M3	2
53	8113010	BRACKET, CONNECTOR MTG	连接器安装架	1
54	1434300	LOCK WASHER, TOOTH, M3	外齿锁紧垫圈 M3	2
55	1211325	SCREW M3×25	十字盘头螺钉 M3×25	2
56	8134783	BATTERY CONNECT CABLE, ASSEMBLY	电瓶接接线组件	1
57	1422513	LOCK WASHER M5	弹簧垫圈 M5	2
58	8133002	CAP, SOLUTION FILL	注水孔堵	1
59	8113009	NYLON, CLAMP	尼龙电缆固定夹	9

CONTROL CONSOLE GROUP / 控制箱组件 (i20NB)



PARTS LIST / 零件清单

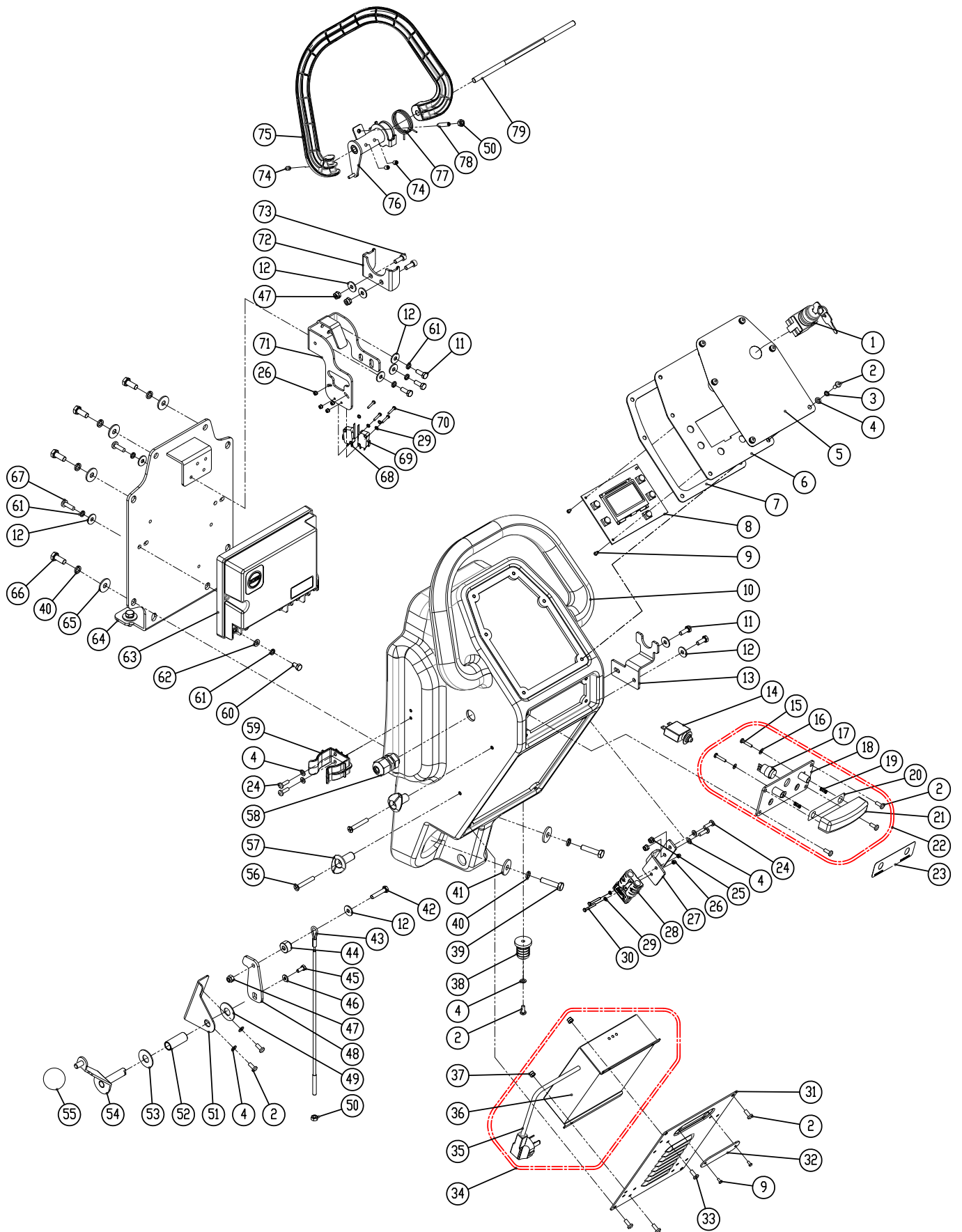
CONTROL CONSOLE GROUP / 控制箱组件 (i20NB)

DIA NO.	PART NUMBER	DESCRIPTION	零件名称	NO REQ'D
1	8114709	KEY SWITCH	钥匙开关	1
	8114752	KEY	钥匙开关钥匙	1
2	8134724	CONTROL PANEL DECAL, i20NB	i20NB 控制面板贴纸	1
3	1221512	SCREW M5×12	十字槽盘头螺钉 M5×12	17
4	1422513	LOCK WASHER M5	弹簧垫圈 M5	6
5	1421510	FLAT WASHER M5×φ10×1.0	普通平垫圈 M5×φ10×1.0	13
6	8134720	CONTROL PANEL, i20NB	i20NB 控制面板	1
7	8134015	GASKET	密封垫	1
8	8134723	CONTROL PANEL PCB, i20NB	i20NB 控制面板 PCB	1
9	1221306	SCREW M3×6	十字槽盘头螺钉 M3×6	7
10	8134005A	CONTROL HOUSING, i20NB	i20NB 控制箱壳体	1
11	1021616	HEX BOLT M6 X 16	六角头螺栓 M6×16	5
12	1421618	PLAIN WASHER M6×φ18×1.6,SS	不锈钢平垫圈 M6×φ18×1.6	10
13	8114008	BRACKET, SQGE STORAGE	水刮储存支架	1
14	8310740	CIRCUIT BREAKER, 5A	过载保护器 5A	1
15	8134006	PLATE, CIRCUIT BREAKERS MNTG	过载保护器安装板	1
16	8144025	LABEL, CIRCUIT BREAKER	过载保护器贴纸	1
17	1221515	PH SCREW M5×15	十字盘头螺钉 M5×15	4
18	1123507	LOCK NUT M5	防松螺母 M5	2
19	1123305	LOCK NUT M3	防松螺母 M3	4
20	8113010	BRACKET, CONNECTOR MTG	连接器安装架	1
21	8113020	CONNECTOR	连接器	1
22	1434300	LOCK WASHER, TOOTH, M3	外齿锁紧垫圈 M3	4
23	1211325	SCREW M3×25	十字盘头螺钉 M3×25	2
24	8134060	PLATE, ON BOARD BATTERY CHARGER	充电器安装板	1
25	8134061	CLEAR COVER	透明盖	1
26	1221412	SCREW M4×12	十字槽盘头螺钉 M4×12	4
27	8132010-CH	ON BOARD BATTERY CHARGER,KIT	车载充电器套装	1
28	8112060A	BATTERY CHARGER POWER CORD, KIT	车载充电器电源线 (含连接器)	1
29	8132010A	ON BOARD BATTERY CHARGER	车载充电器	1
30	1123406	LOCK NUT M4	M4 防松螺母	4
31	8114005	CONNECTOR	接头	1
32	1021840	HEX BOLT M8×40	六角头螺栓 M8×40	2
33	1422821	LOCK WASHER M8	弹簧垫圈 M8	12
34	1421828	FLAT WASHER M8×φ28×3	加大平垫圈 M8×φ28×3	2
35	1021630	HEX HEAD BOLT M6×30,SS	不锈钢六角头螺栓 M6×30	1

CONTROL CONSOLE GROUP / 控制箱组件 (i20NB)

DIA NO.	PART NUMBER	DESCRIPTION	零件名称	NO REQ'D
36	8134082	CABLE, SQGE LIFT	水刮提升钢丝绳	1
37	8014101	LIFTING ROPE SPACER	水刮拉绳套	1
38	1021512	HEX HEAD BOLT M5×12,SS	不锈钢六角头螺栓 M5×12	1
39	1421515	FLAT WASHER M5× ϕ 15×1.0	普通平垫圈 M5× ϕ 15×1.0	1
40	1123608	LOCK NUT M6	防松螺母 M6	3
41	8014012	BAFFLE	水刮提升挡板	1
42	8113111	NYLON FLAT WASHER ϕ 12.9× ϕ 25.4×0.8	尼龙平垫圈 ϕ 12.9× ϕ 25.4×0.8	1
43	1121605	HEX NUT M6	六角螺母 M6	2
44	8134501	BRACKET	挡板	1
45	8134081	SLEEVEE	轴套	1
46	1421132	FLAT WASHER M12× ϕ 32×1.5	平垫圈 M12× ϕ 32×1.5	1
47	8134080	SQUEEGEE LIFTING HANDLE	水刮提升手柄	1
48	8113104	BALL KNOB M8	球形手把 M8	1
49	1222641	SUNK HEAD SCREW M6 X 40	十字沉头螺钉 M6×40	2
50	8210112	HOOK, POWER CORD	绕线架	2
51	8014054	STRAIN RELIEF	电缆固定头	1
52	6210111	CLAMP, DRAIN HOSE	放污管夹	1
53	1023612	HEX BOLT M6 X 12, COPPER	六角铜螺栓 M6×12	6
54	1422616	LOCK WASHER, M6	弹簧垫圈 M6	11
55	1423612	FLAT WASHER M6× ϕ 12×1, COPPER	铜垫圈	6
56	8134790	MAIN CONTROLLER, i20NB	i20NB 主控制器	1
57	8134070	REAR PLATE, CONTROL CONSOLE	控制箱后盖板	1
58	1421824	FLAT WASHER M8× ϕ 24×2	平垫圈 M8× ϕ 24×2	10
59	1021820	HEX BOLT M8×20	六角头螺栓 M8×20	10
60	1221620	PH SCREW M6 X 20	十字盘头螺钉 M6×20	2
61	8114712	MICRO SWITCH	微动开关	1
62	1021320	SCREW M3 X 20	外六角螺钉 M3×20	2
63	8134022	BRACKET,SWITCH	开关支架	1
64	8114402	BRACKET, SPRING	弹簧支架	1
65	1521616	SCREW M6X16, HEX SCOKET	内六角圆柱头螺钉 M6×16	2
66	1534608	SET SCREW M6 ×8	内六角紧定螺钉 M6 ×8	4
67	8134300	LEVER, BAIL	开关拉把	1
68	8114300	ACTUATOR	开关拨盘组件	1
69	8114306	SPRING	扭转弹簧	1
70	1535630	SET SCREW M6 ×30	内六角紧定螺钉 M6 ×30	1
71	8114101	SHAFT	轴	1

CONTROL CONSOLE GROUP / 控制箱组件 (i20NBT /i24BT)



CONTROL CONSOLE GROUP / 控制箱组件 (i20NBT /i24BT)

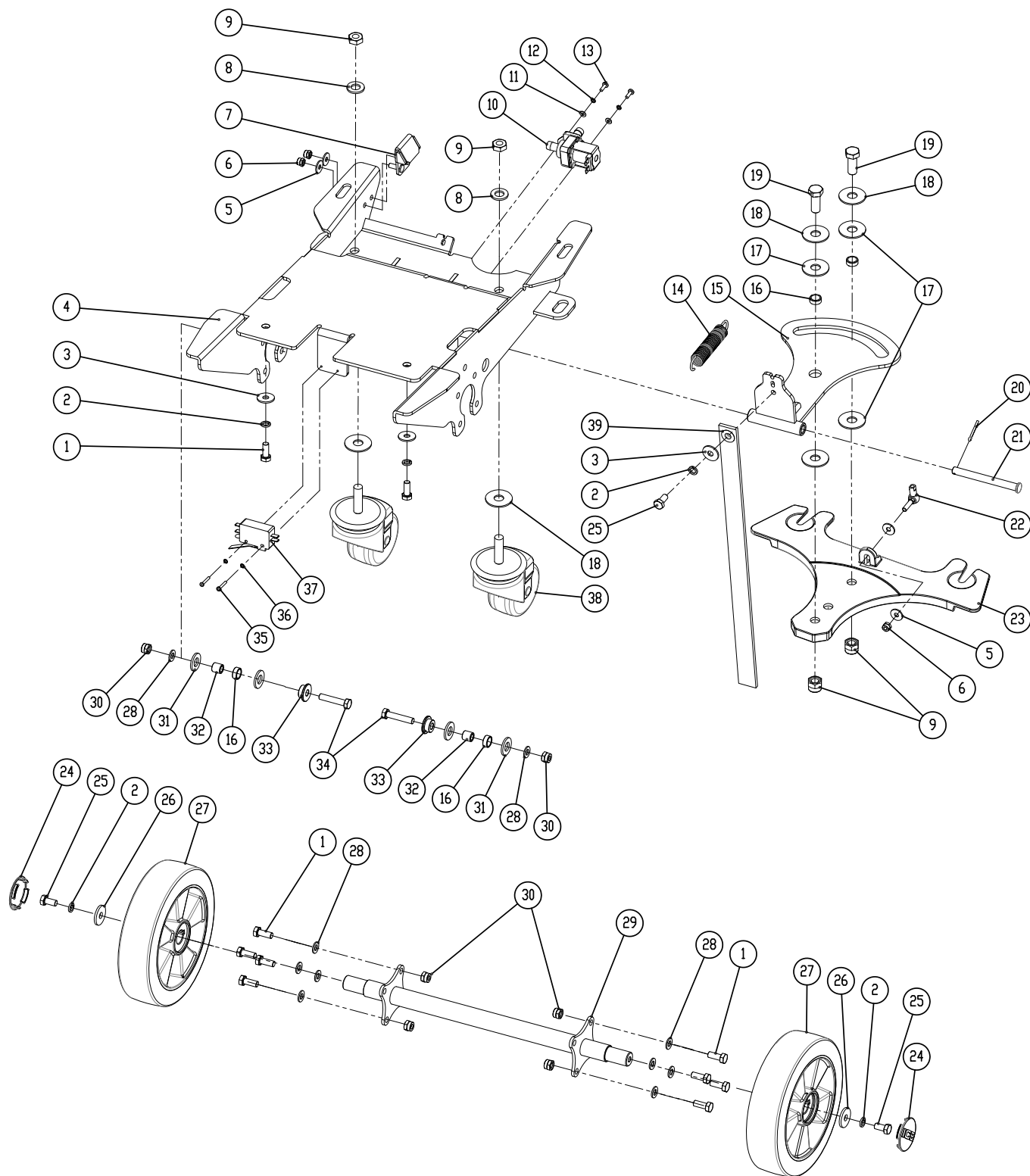
DIA NO.	PART NUMBER	DESCRIPTION	零件名称	NO REQ'D
1	8114709	KEY SWITCH	钥匙开关	1
	8114752	KEY	钥匙开关钥匙	1
2	1221512	SCREW M5×12	十字槽盘头螺钉 M5×12	17
3	1422513	LOCK WASHER M5	弹簧垫圈 M5	6
4	1421510	FLAT WASHER M5× ϕ 10×1.0	普通平垫圈 M5× ϕ 10×1.0	13
5	8144724	CONTROL PANEL DECAL, i20NBT	i20NBT 控制面板贴纸	1
	8144725	CONTROL PANEL DECAL, i24BT	i24BT 控制面板贴纸	1
6	8144720	CONTROL PANEL, i20NBT	i20NBT 控制面板	1
7	8134015	GASKET	密封垫	1
8	8144792	CONTROL PANEL PCB, i20NBT	i20NBT 控制面板 PCB	1
9	1221306	SCREW M3×6	十字槽盘头螺钉 M3×6	7
10	8134005A	CONTROL HOUSING, i20NB	i20NB 控制箱壳体	1
11	1021616	HEX BOLT M6 X 16	六角头螺栓 M6×16	5
12	1421618	PLAIN WASHER M6× ϕ 18×1.6,SS	不锈钢平垫圈 M6× ϕ 18×1.6	10
13	8114008	BRACKET, SQGE STORAGE	水刮储存支架	1
14	8310740	CIRCUIT BREAKER, 5A	过载保护器 5A	1
15	1221421	SCREW M4×20	十字槽盘头螺钉 M4×20	2
16	1421409	FLAT WASHER M4× ϕ 9×0.8	平垫圈 M4× ϕ 9×0.8	2
17	8124715A	EMERGENCY STOP SWITCH, KIT	自锁按钮开关套装	1
18	8144030	BASE, CIRCUIT BREAKERS MNTG	过载保护器安装座	1
19	8124008	SPRING	压缩弹簧	2
20	8124716	LED LIGHT	LED 灯	1
21	8124007	BUTTON,EMERGENCY STOP	急停开关按钮	1
22	8124710	EMERGENCY STOP SWITCH KIT	急停开关组件	1
23	8144025	LABEL, CIRCUIT BREAKER	过载保护器贴纸	1
24	1221515	PH SCREW M5×15	十字盘头螺钉 M5×15	4
25	1123507	LOCK NUT M5	防松螺母 M5	6
26	1123305	LOCK NUT M3	防松螺母 M3	6
27	8113010	BRACKET, CONNECTOR MTG	连接器安装架	1
28	8134750	CONNECTOR, GRID, BLUE	蓝色连接器	1
29	1434300	LOCK WASHER, TOOTH, M3	外齿锁紧垫圈 M3	6
30	1211325	SCREW M3×25	十字盘头螺钉 M3×25	2
31	8134060	PLATE, ON BOARD BATTERY CHARGER	充电器安装板	1
32	8134061	CLEAR COVER	透明盖	1
33	1221412	SCREW M4×12	十字槽盘头螺钉 M4×12	4
34	8132010-CH	ON BOARD BATTERY CHARGER,KIT	车载充电器套装	1
35	8112060A	BATTERY CHARGER POWER CORD, KIT	车载充电器电源线 (含连接器)	1
36	8132010A	ON BOARD BATTERY CHARGER	车载充电器	1
37	1123406	LOCK NUT M4	M4 防松螺母	4
38	8114005	CONNECTOR	接头	1
39	1021840	HEX BOLT M8×40	六角头螺栓 M8×40	2

PARTS LIST / 零件清单

CONTROL CONSOLE GROUP / 控制箱组件 (i20NBT / i24BT)

DIA NO.	PART NUMBER	DESCRIPTION	零件名称	NO REQ'D
40	1422821	LOCK WASHER M8	弹簧垫圈 M8	12
41	1421828	FLAT WASHER M8× ϕ 28×3	加大平垫圈 M8× ϕ 28×3	2
42	1021630	HEX HEAD BOLT M6×30,SS	不锈钢六角头螺栓 M6×30	1
43	8134082	CABLE, SQGE LIFT	水刮提升钢丝绳	1
44	8014101	LIFTING ROPE SPACER	水刮拉绳套	1
45	1021512	HEX HEAD BOLT M5×12,SS	不锈钢六角头螺栓 M5×12	1
46	1421515	FLAT WASHER M5× ϕ 15×1.0	普通平垫圈 M5× ϕ 15×1.0	1
47	1123608	LOCK NUT M6	防松螺母 M6	3
48	8014012	BAFFLE	水刮提升挡板	1
49	8113111	NYLON FLAT WASHER ϕ 12.9× ϕ 25.4×0.8	尼龙平垫圈 ϕ 12.9× ϕ 25.4×0.8	1
50	1121605	HEX NUT M6	六角螺母 M6	2
51	8134501	BRACKET	挡板	1
52	8134081	SLEEVEE	轴套	1
53	1421132	FLAT WASHER M12× ϕ 32×1.5	平垫圈 M12× ϕ 32×1.5	1
54	8134080	SQUEEGEE LIFTING HANDLE	水刮提升手柄	1
55	8113104	BALL KNOB M8	球形手把 M8	1
56	1222641	SUNK HEAD SCREW M6 X 40	十字沉头螺钉 M6×40	2
57	8210112	HOOK, POWER CORD	绕线架	2
58	8014054	STRAIN RELIEF	电缆固定头	1
59	6210111	CLAMP, DRAIN HOSE	放污管夹	1
60	1023612	HEX BOLT M6 X 12, COPPER	六角铜螺栓 M6×12	8
61	1422616	LOCK WASHER, M6	弹簧垫圈 M6	13
62	1423612	FLAT WASHER M6× ϕ 12×1, COPPER	铜垫圈	8
63	8144790	MAIN CONTROLLER, i20NBT	i20NBT 主控制器	1
64	8134070	REAR PLATE, CONTROL CONSOLE	控制箱后盖板	1
65	1421824	FLAT WASHER M8× ϕ 24×2	平垫圈 M8× ϕ 24×2	10
66	1021820	HEX BOLT M8×20	六角头螺栓 M8×20	10
67	1221620	PH SCREW M6×20	十字盘头螺钉 M6×20	2
68	8114712	MICRO SWITCH	微动开关	1
69	8124743	MICRO SWITCH	微动开关	1
70	1021320	SCREW M3 X 20	外六角螺钉 M3×20	4
71	8134022	BRACKET, SWITCH	开关支架	1
72	8114402	BRACKET, SPRING	弹簧支架	1
73	1521616	SCREW M6X16, HEX SCOKET	内六角圆柱头螺钉 M6×16	2
74	1534608	SET SCREW M6 ×8	内六角紧定螺钉 M6 ×8	4
75	8134300	LEVER, BAIL	开关拉把	1
76	8114300	ACTUATOR	开关拨盘组件	1
77	8114306	SPRING	扭转弹簧	1
78	1535630	SET SCREW M6 ×30	内六角紧定螺钉 M6 ×30	1
79	8114101	SHAFT	轴	1

FRAME & WHEEL GROUP / 底盘 & 轮轴组件 (i20NB)

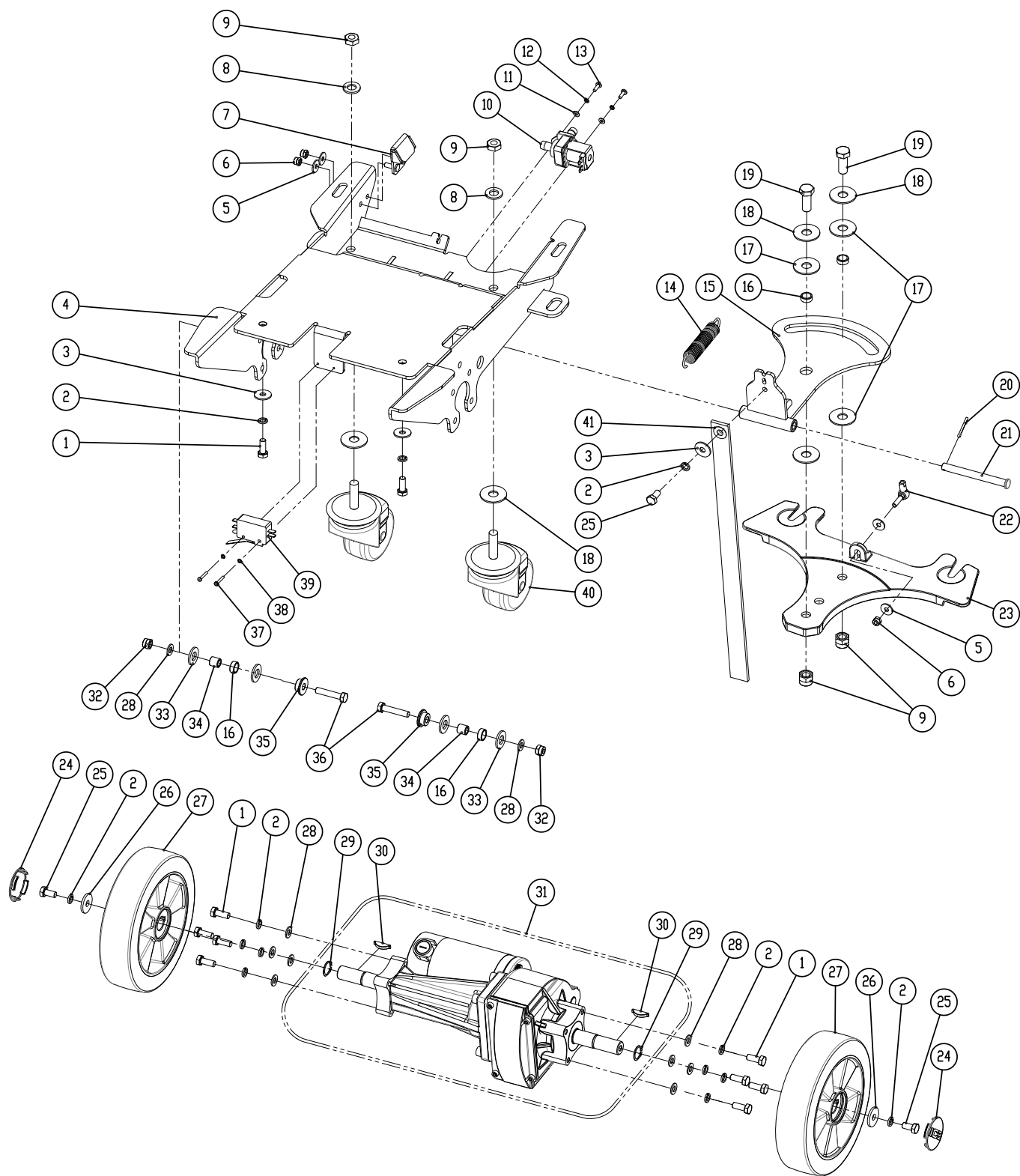


PARTS LIST / 零件清单

FRAME & WHEEL GROUP / 底盘 & 轮轴组件 (i20NB)

DIA NO.	PART NUMBER	DESCRIPTION	零件名称	NO REQ'D
1	1021820	HEX BOLT M8×20	六角头螺栓 M8×20	12
2	1422821	LOCK WASHER M8	弹簧垫圈 M8	7
3	1421824	FLAT WASHER M8× ϕ 24×2	加大平垫圈 M8× ϕ 24×2	5
4	8145100	MAIN FRAME	车架组件	1
5	1421618	FLAT WASHER M6× ϕ 18×1.6	加大平垫圈 M6× ϕ 18×1.6	4
6	1123608	LOCK NUT M6	防松螺母 M6	3
7	8115300	BRACKET, PEDAL LOCKING	刷盘提升卡扣	1
8	1421124	FLAT WASHER M12× ϕ 24×2.5	平垫圈 M12× ϕ 24×2.5	4
9	1123115	LOCK NUT M12	防松螺母 M12	4
10	8119003	SOLENOID VALVE, 24VDC	放水电磁阀 24VDC	1
11	1421409	FLAT WASHER M4× ϕ 9×0.8	平垫圈 M4× ϕ 9×0.8	2
12	1422411	LOCK WASHER M4	弹簧垫圈 M4	2
13	1221412	SCREW M4×12	十字槽盘头螺钉 M4×12	4
14	8115004	SPIRING	拉伸弹簧	1
15	8135010	BRACKET, SQGE LIFT	水刮转轴	1
16	8115405	SLEEVE, P/M	含油轴承	4
17	8135001	PLASTIC THRUST WASHER M12× ϕ 30×1.5	推力垫圈 M12× ϕ 30×1.5	4
18	1421132	FLAT WASHER M12× ϕ 32×1.5	平垫圈 M12× ϕ 32×1.5	4
19	1021230	HEX BOLT M12 ×30	六角头螺栓 M12 ×30	2
20	1645324	COTTER 3.2 ×24	开口销 3.2 ×24	1
21	8115003	PIN	销轴	1
22	8114511	BALL JOINT M6	球头关节轴承 M6	1
23	8115001	BRACKET, SQGE MNTG	水刮托架	1
24	8115203	COVER, WHEEL	轮端盖	2
25	1021816	HEX BOLT M8×16	六角头螺栓 M8×16	3
26	1421828	FLAT WASHER M8× ϕ 28×3	特大垫圈 M8× ϕ 28×3	2
27	8115200	WHEEL, 8 INCH	8" 运输轮	2
28	1421816	FLAT WASHER M8× ϕ 16×1.6	平垫圈 M8× ϕ 16×1.6	10
29	8135405	SHAFT	轮轴	1
30	1123810	LOCK NUT M8	防松螺母 M8	10
31	8117007	NYLON WASHER ϕ 12.9× ϕ 24×2.5	尼龙垫圈 ϕ 12.9× ϕ 24×2.5	4
32	8115404	BEARING, JOURNAL	含油轴承	2
33	8145001	BUSHING	台阶套	2
34	1021840	HEX BOLT M8 ×40	六角头螺栓 M8 ×40	2
35	1211325	SCREW M3×25	十字盘头螺钉 M3×25	2
36	1434300	LOCK WASHER, TOOTH, M3	外齿锁紧垫圈 M3	2
37	8014071	MICRO SWITCH 20A	微动开关 20A	1
38	8115500	CASTER, SWIVEL, 80MM	3.15" 万向轮	2
39	8210118	STATIC STRAP	静电带	1

FRAME & TRANSAXLE GROUP / 底盘 & 驱动轴组件 (i20NBT / i24BT)

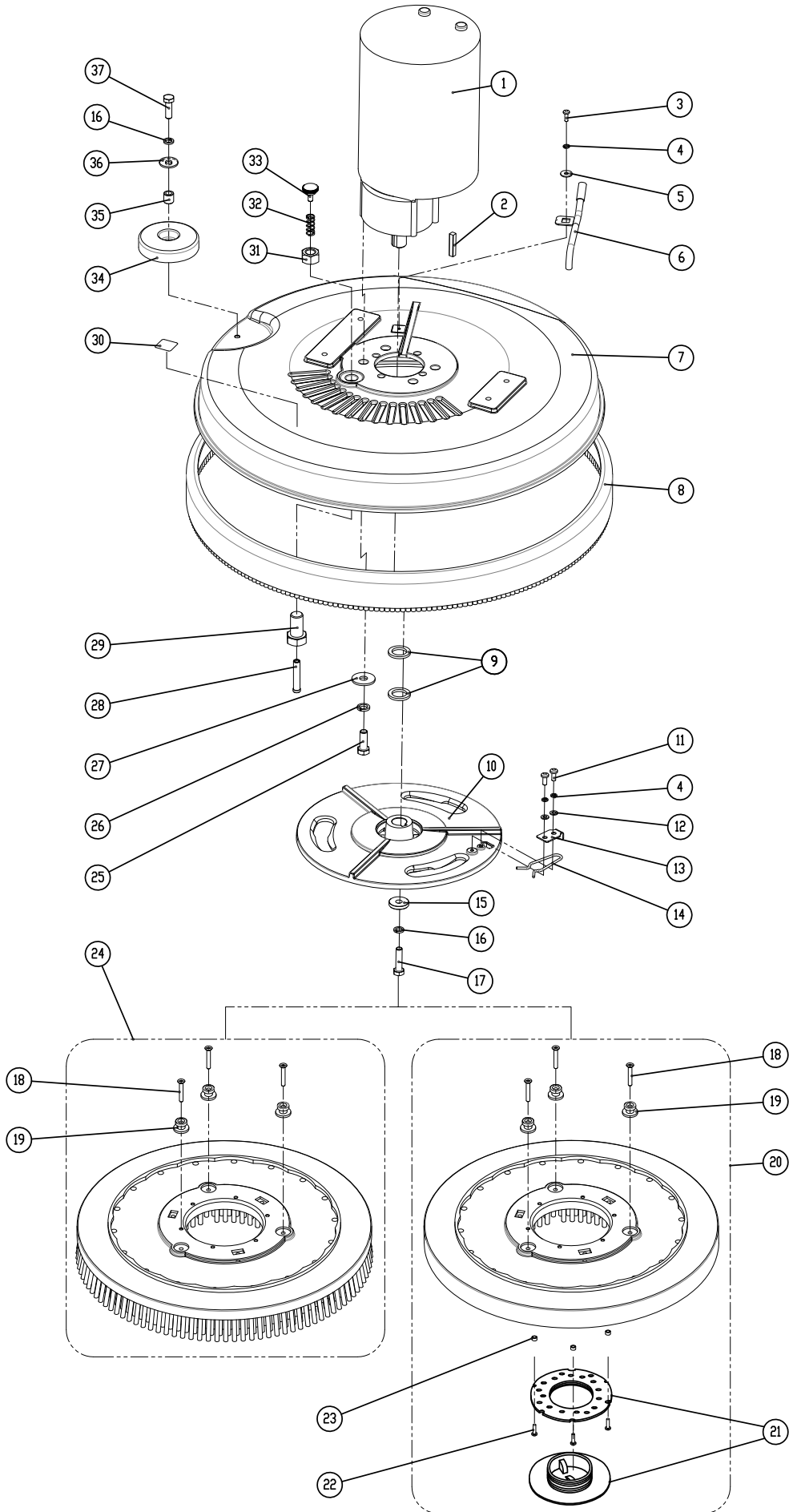


PARTS LIST / 零件清单

FRAME & TRANSAXLE GROUP / 底盘 & 驱动轴组件 (i20NBT /i24BT)

DIA NO.	PART NUMBER	DESCRIPTION	零件名称	NO REQ'D
1	1021820	HEX BOLT M8×20	六角头螺栓 M8×20	12
2	1422821	LOCK WASHER M8	弹簧垫圈 M8	15
3	1421824	FLAT WASHER M8× ϕ 24×2	加大平垫圈 M8× ϕ 24×2	5
4	8145100	MAIN FRAME	车架组件	1
5	1421618	FLAT WASHER M6× ϕ 18×1.6	加大平垫圈 M6× ϕ 18×1.6	4
6	1123608	LOCK NUT M6	防松螺母 M6	3
7	8115300	BRACKET, PEDAL LOCKING	刷盘提升卡扣	1
8	1421124	FLAT WASHER M12× ϕ 24×2.5	平垫圈 M12× ϕ 24×2.5	4
9	1123115	LOCK NUT M12	防松螺母 M12	4
10	8119003	SOLENOID VALVE, 24VDC	放水电磁阀 24VDC	1
11	1421409	FLAT WASHER M4× ϕ 9×0.8	平垫圈 M4× ϕ 9×0.8	2
12	1422411	LOCK WASHER M4	弹簧垫圈 M4	2
13	1221412	SCREW M4×12	十字槽盘头螺钉 M4×12	4
14	8115004	SPIRNG	拉伸弹簧	1
15	8135010	BRACKET, SQGE LIFT	水刮转轴	1
16	8115405	SLEEVE, P/M	含油轴承	4
17	8135001	PLASTIC THRUST WASHER M12×ϕ 30×1.5	推力垫圈 M12× ϕ 30×1.5	4
18	1421132	FLAT WASHER M12× ϕ 32×1.5	平垫圈 M12× ϕ 32×1.5	4
19	1021230	HEX BOLT M12 ×30	六角头螺栓 M12 ×30	2
20	1645324	COTTER 3.2 ×24	开口销 3.2 ×24	1
21	8115003	PIN	销轴	1
22	8114511	BALL JOINT M6	球头关节轴承 M6	1
23	8115001	BRACKET, SQGE MNTG	水刮托架	1
24	8115203	COVER, WHEEL	轮端盖	2
25	1021816	HEX BOLT M8×16	六角头螺栓 M8×16	3
26	1421828	FLAT WASHER M8× ϕ 28×3	特大垫圈 M8× ϕ 28×3	2
27	8125200	WHEEL, 8 INCH	8" 运输轮	2
28	1421816	FLAT WASHER M8× ϕ 16×1.6	平垫圈 M8× ϕ 16×1.6	10
29	1436019	RETAINING RING 19	轴用弹性挡圈 19	2
30	8125403	WOODRUFF KEY	半圆键	2
31	8125410	TRANSAXLE, KIT	驱动轴套装	1
32	1123810	LOCK NUT M8	防松螺母 M8	10
33	8117007	NYLON WASHER ϕ12.9×ϕ24×2.5	尼龙垫圈 ϕ 12.9× ϕ 24×2.5	4
34	8115404	BEARING, JOURNAL	含油轴承	2
35	8145001	BUSHING	台阶套	2
36	1021840	HEX BOLT M8 ×40	六角头螺栓 M8 ×40	2
37	1211325	SCREW M3×25	十字盘头螺钉 M3×25	2
38	1434300	LOCK WASHER, TOOTH, M3	外齿锁紧垫圈 M3	2
39	8014071	MICRO SWITCH 20A	微动开关 20A	1
40	8115500	CASTER, SWIVEL, 80MM	3.15" 万向轮	2
41	8210118	STATIC STRAP	静电带	1

SCRUB HEAD GROUP / 刷盘组件 (i20NB / i20NBT)

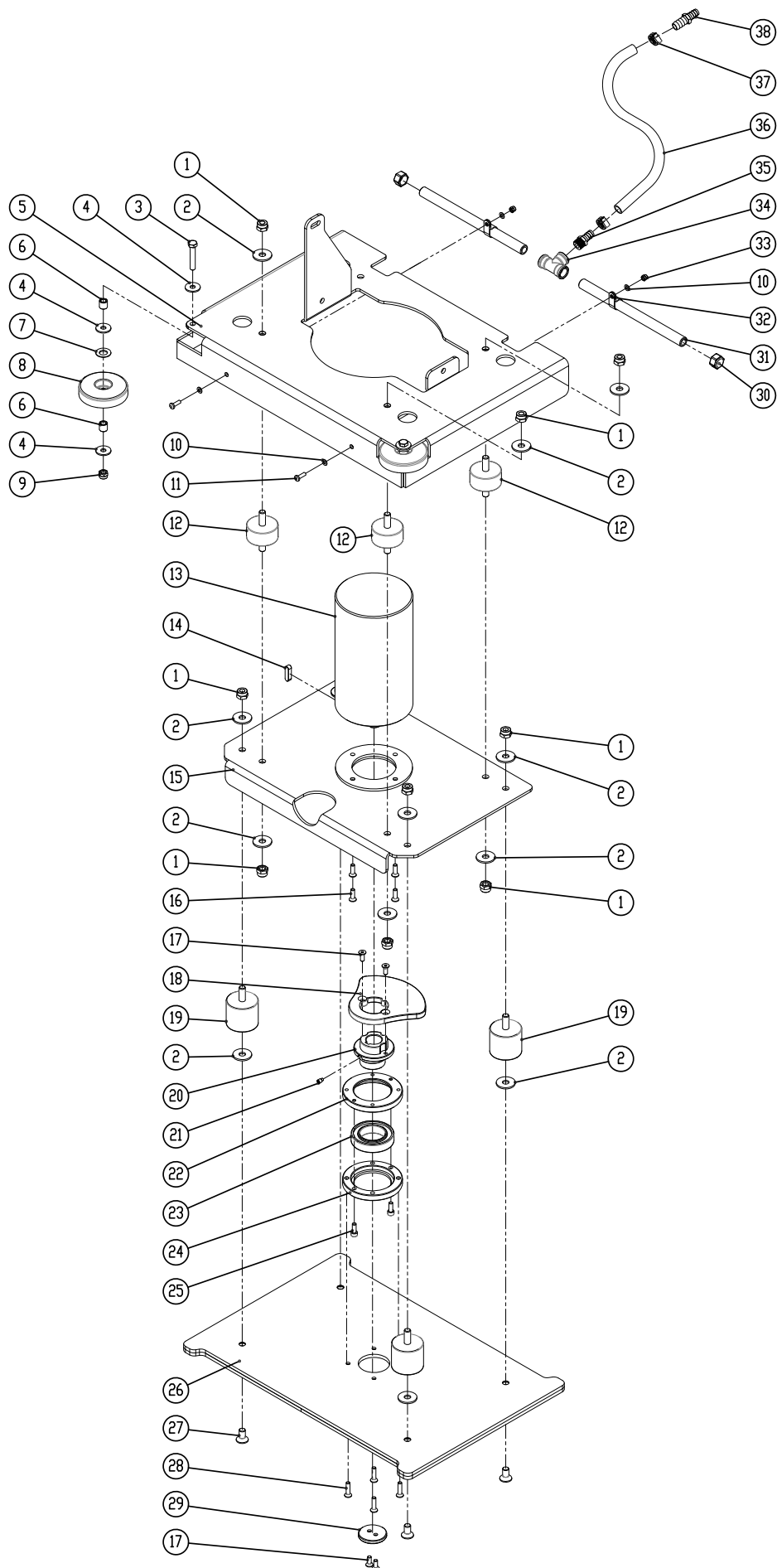


PARTS LIST / 零件清单

SCRUB HEAD GROUP / 刷盘组件 (i20NB / i20NBT)

DIA NO.	PART NUMBER	DESCRIPTION	零件名称	NO REQ'D
1	8116200	BRUSH MOTOR, 24VDC 1.0HP, KIT	刷盘电机套装, 24VDC, 1.0 HP	1
2	1656432	KEY	平键	1
3	1221412	SCREW M4×12	十字槽盘头螺钉 M4×12	1
4	1422513	LOCK WASHER M5	弹簧垫圈 M5	3
5	1421518	FLAT WASHER M5× ϕ 18×2	特大平垫圈 M5× ϕ 18×2	1
6	8116100	WATER SUPPLY TUBE	进水管组件	1
7	8116006	SCRUB HEAD HOUSING	刷盘罩	1
8	8116020	BUMPER, SCRUB HEAD	裙边组件	1
9	8116001	SPACER	隔套	2
10	8116008	HUB, DRIVE, 3 LUG	刷盘座	1
11	1221512	SCREW M5×12	十字槽盘头螺钉 M5×12	2
12	1421510	FLAT WASHER M5× ϕ 10×1	平垫圈 M5× ϕ 10×1	2
13	8116002	BRUSH CLAMP PLATE	压块	1
14	8116003	SPRING CLIP	刷盘弹簧夹	1
15	8116010	FLAT WASHER ϕ 8.5× ϕ 25.4×4.5	平垫圈 ϕ 8.5× ϕ 25.4×4.5	1
16	1422821	LOCK WASHER M8	弹簧垫圈 M8	2
17	1023815	HEX BOLT 5/16-18 ×1.5" UNC	六角头螺栓 5/16-18×1.5" UNC	1
18	1222635	SCREW, M6X35	十字槽沉头螺钉 M6×35	6
19	8116030	STUD	定位轴	6
20	9040019	19" PAD DRIVER	19" 针座	1
	9040019K	19" PAD DRIVER (OPTIONAL)	19" 针座 (选配)	1
21	9000001	BIG MOUTH	中心定位器总成	1
	9000003	CENTER-LOK 3 (OPTIONAL)	3号中心定位器总成 (选配)	1
22	1321325	SELF-TAPPING SCREW, ST4.8X25	十字盘头尖尾自攻螺钉 ST4.8×25	3
23	8116040	SPACER	增高垫	3
24	9050020	20" BRUSH, 0.7mm PP BRISTLE	20" 洗地刷, 0.7mm 黑色 PP 刷丝	1
	9050020E	20" BRUSH, 0.5mm PP BRISTLE (OPTIOAL)	20" 洗地刷, 0.5mm PP 刷丝 (选配)	1
25	1023010	HEX BOLT 3/8-16 ×1" UNC	六角头螺栓 3/8-16 ×1" UNC	4
26	1422026	LOCK WASHER M10	弹簧垫圈	4
27	1421030	FLAT WASHER M10× ϕ 30×2.5	加大平垫圈 M10× ϕ 30×2.5	4
28	8116202	PIN	销	1
29	8116205	SCREW M14 × 20	螺母 M14 × 20	1
30	8111023	WARNING LABEL	转动警告贴纸	1
31	1121913	HEX NUT M14	六角螺母 M14	1
32	8116204	SRPING	压缩弹簧	1
33	8116210	KNOB M6	把手 M6	1
34	8116009	PROTECTIVE WHEEL	防撞轮	1
35	8115404	SLEEVE, P/M	含油轴承	1
36	1421824	FLAT WASHER M8× ϕ 24×2.0	普通平垫圈 M8× ϕ 24×2.0	1
37	1021825	HEX BOLT M8×25	六角头螺栓 M8×25	1

ORBITAL HEAD GROUP / 振动头组件 (i20NBT-OB)

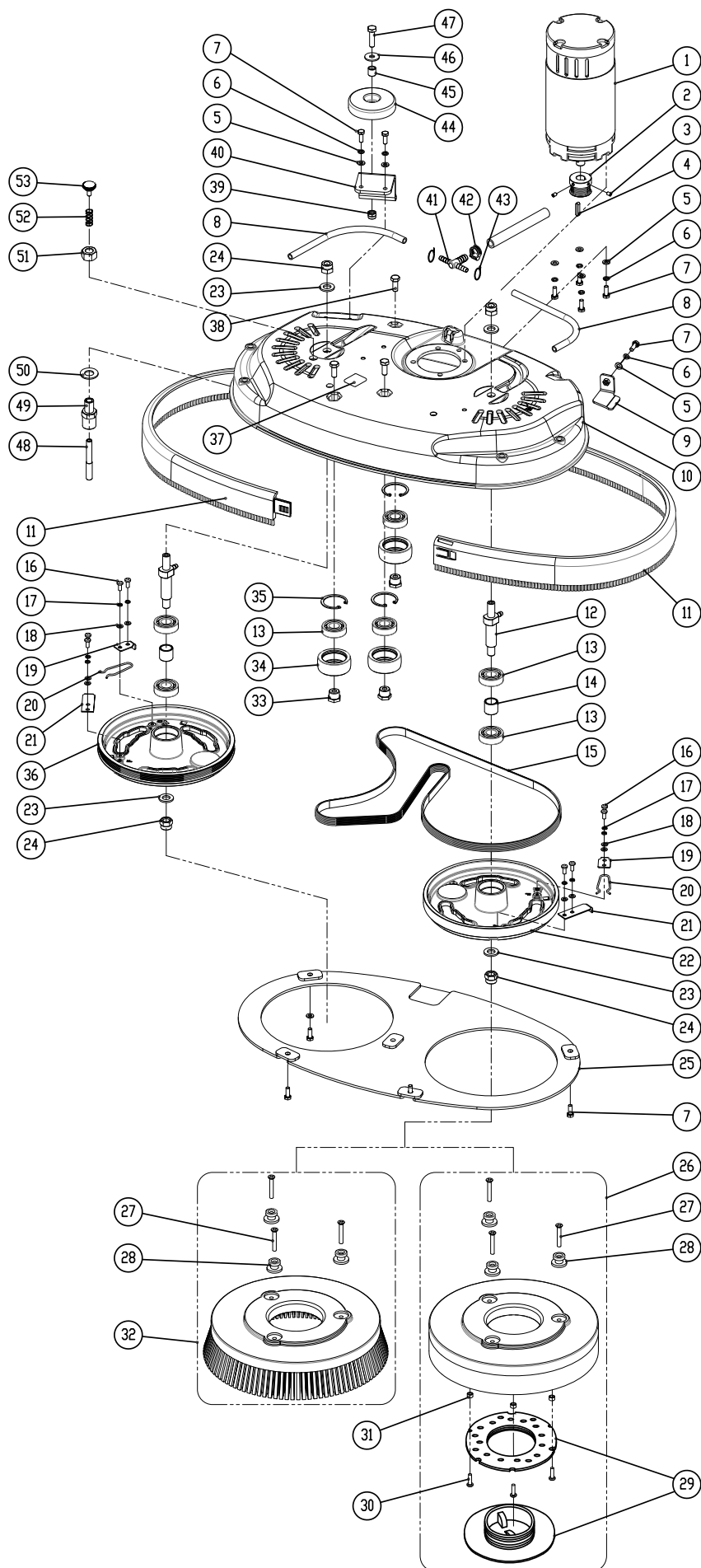


PARTS LIST / 零件清单

ORBITAL HEAD GROUP / 振动头组件 (i20NBT-OB)

DIA NO.	PART NUMBER	DESCRIPTION	零件名称	NO REQ'D
1	1123012	LOCK NUT, M10	防松螺母 M10	12
2	1421030	FLAT WASHER M10× ϕ 30×2.5	平垫圈 M10× ϕ 30×2.5	16
3	1022845	HEX BOLT M8×45	六角头螺栓 M8×45	2
4	1421824	FLAT WASHER M8× ϕ 24×2.0	普通平垫圈 M8× ϕ 24×2.0	6
5	8146101	BRACKET, ORBITAL HEAD	振动头支架	1
6	8115404	BEARING, JOURNAL	含油轴承	4
7	1435013	WAVE WASHER	波形垫圈	2
8	8116009	PROTECTIVE WHEEL	防撞轮	2
9	1123810	LOCK NUT, M8	防松螺母 M8	2
10	1421510	FLAT WASHER M5× ϕ 10×1.0	平垫圈 M5× ϕ 10×1.0	4
11	1221515	SCREW M5×15	十字槽盘头螺钉 M5×15	2
12	8146116	ISOLATORS, M10×25	减震螺钉 M10×25	4
13	8146199	MOTOR, 24VDC 550W 2200RPM, KIT	电机套装, 24VDC 550W 2200RPM	1
14	8146110	KEY, 8×7×28	普通平键 8×7×28	1
15	8146102	BRACKET, MOTOR MOUNTING	电机安装支架	1
16	1513620	HEX SOCKET SCREW, M6×20	内六角沉头螺钉 M6×20	4
17	1513616	HEX SOCKET SCREW, M6×16	内六角沉头螺钉 M6×16	4
18	8146202	ECCENTRIC	配重块	1
19	8146107	ISOLATORS, M10×25	减震螺钉 M10×25	4
20	8146201	ECCENTRIC SHAFT	偏心轴	1
21	1535610	SET SCREW, M6×10	内六角紧定螺钉 M6×10	1
22	8146204	BEARING HOUSING	轴承套	1
23	1612608	BALL BEARING 6008	双面密封球轴承 6008	1
24	8146203	BEARING HOUSING	轴承定位套	1
25	1521616	HEX SOCKET BOLT M6×16	内六角圆柱头螺钉	2
26	8146103	PAD DRIVER	振动机工作盘	1
27	1513020	HEX SOCKET SCREW, M10×20	内六角沉头螺钉 M10×20	4
28	1513625	HEX SOCKET SCREW, M6×25	内六角沉头螺钉 M6×25	4
29	8146205	PLATE	轴承挡板	1
30	8146303	END CAP 3/8	堵头 3/8	2
31	8146302	PVC TUBING	喷水管	2
32	8146305	PLASTIC CLAMP	尼龙固定夹	2
33	1123507	LOCK NUT M5	防松螺母 M5	2
34	8146301	TEE FITTING 3/8	三通接头 3/8	1
35	8013007	TUBING FITTING	管接头	1
36	8146350	TUBING, ID=12mm, WIRE REINFORCED	透明钢丝防冻水管, 内径 12mm	1
37	1962016	CLAMP	喉箍	2
38	8119012	TUBING FITTING	管接头	1

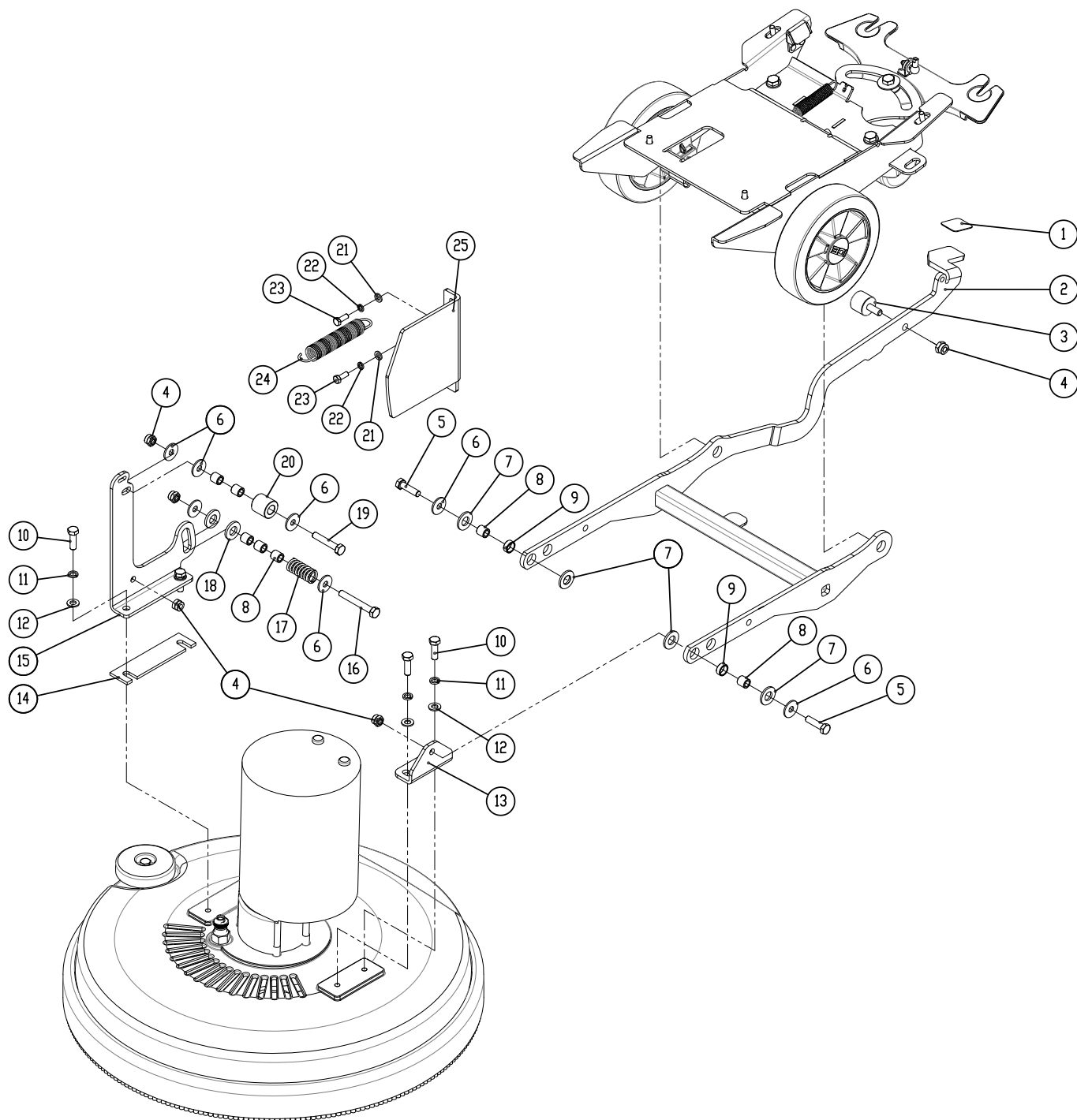
SCRUB HEAD GROUP / 刷盘组件 (i24BT)



PARTS LIST / 零件清单

SCRUB HEAD GROUP / 刷盘组件 (i24BT)

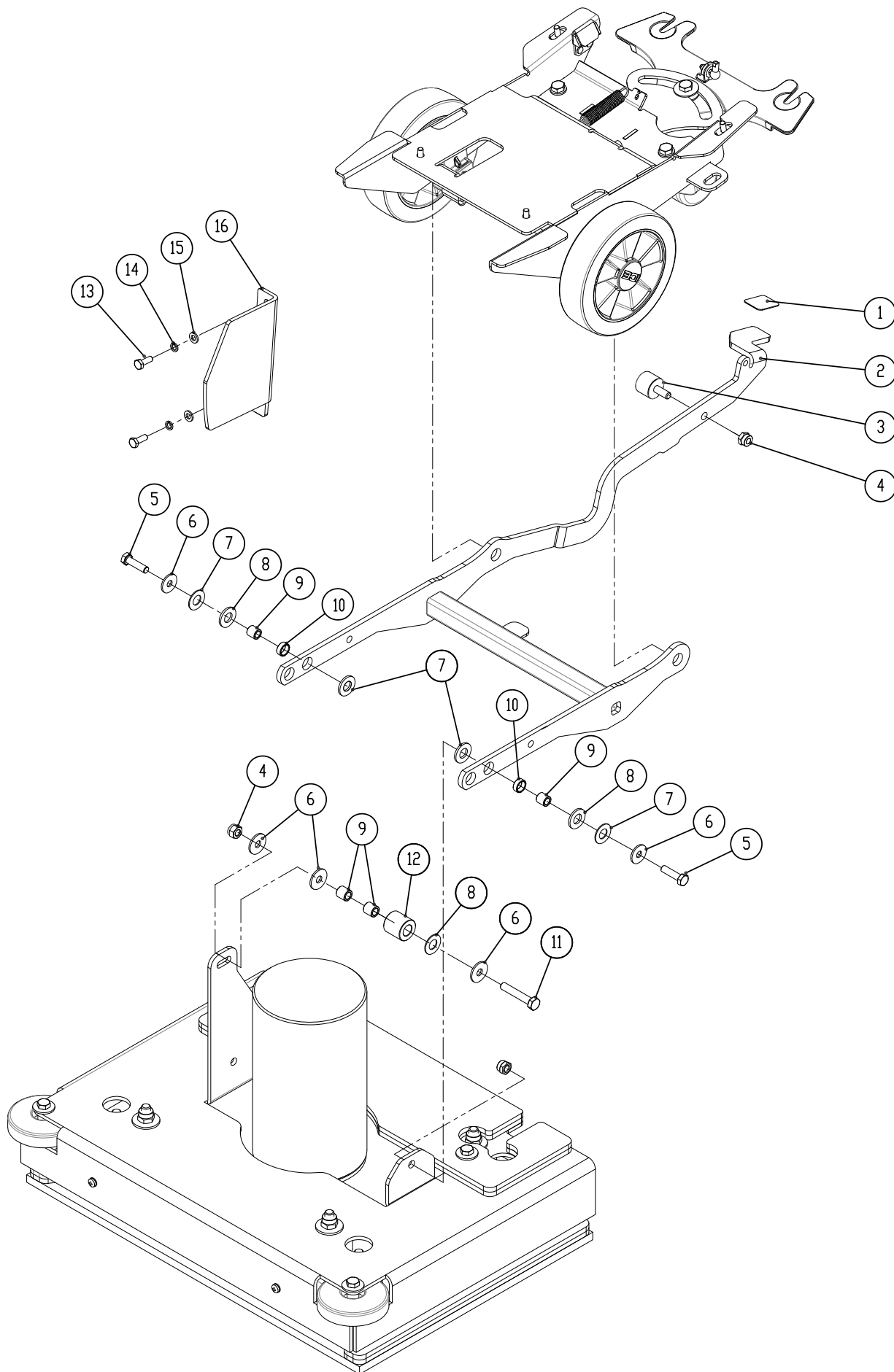
DIA NO.	PART NUMBER	DESCRIPTION	零件名称	NO REQ'D
1	8126200	BRUSH MOTOR, 24VDC 680W 2000RPM, KIT	刷盘电机套装 24VDC, 680W, 2000RPM	1
2	8126006	SHEAVE, SS	小带轮	1
3	1534508	SCREW, SET, M5X8	内六角紧定螺钉 M5×8	2
4	1655025	KEY, 5X5X25	键 5×5×25	1
5	1421612	FLAT WASHER M6× ϕ 12×1.6	平垫圈 M6× ϕ 12×1.6	7
6	1422616	LOCK WASHER, M6	弹簧垫圈 M6	7
7	1021616	HEX BOLT M6×16	六角头螺栓 M6×16	12
8	8119301	TUBING, ID=6mm, L=250mm	防冻溶液管, ID=6mm, L=245mm	2
9	8126007	BRACKET, GUIDE, BELT	皮带导向支架	1
10	8126002	SCRUB HEAD HOUSING	刷盘罩	1
11	8126050	BUMPER, SCRUB HEAD	裙边	2
12	8126040	SHAFT, PULLY	皮带轮轴	2
13	1612203	BEARING, 6203RS	轴承 6203RS	7
14	8126008	BUSHING	轴套	2
15	8126005	BELT, 6PJ1598	多楔带 6PJ1598	1
16	1221512	SCREW M5×12	十字槽盘头螺钉 M5×12	8
17	1422513	LOCK WASHER M5	弹簧垫圈 M5	8
18	1421510	FLAT WASHER M5× ϕ 10×1	平垫圈 M5× ϕ 10×1	8
19	8116002	BRUSH CLAMP PLATE	压块	2
20	8116003	SPRING CLIP	刷盘弹簧夹	2
21	8126009	PLATE, CLAMP, BRUSH	刷盘挡板	2
22	8126004	HUB, DRIVER, 3LUG, PULLY	平带轮, 刷盘座	1
23	1421124	FLAT WASHER M12× ϕ 24×2.5	平垫圈 M12× ϕ 24×2.5	4
24	1123115	LOCK NUT M12	防松螺母 M12	4
25	8126020	BRACKET, GUARD, SPLASH	防溅挡板	1
26	9040011	11" PAD DRIVER	11" 针座	2
	9040011K	11" PAD DRIVER (OPTIONAL)	11" 针座 (选配)	2
27	1222635	SCREW, M6X35	十字槽沉头螺钉 M6×35	12
28	8116030	STUD	定位轴	12
29	9000001	BIG MOUTH	中心定位器总成	2
	9000003	CENTER-LOK 3 (OPTIONAL)	3号中心定位器总成 (选配)	2
30	1321325	SELF-TAPPING SCREW, ST4.8X25	十字槽盘头尖尾自攻螺钉 ST4.8×25	6
31	8116040	SPACER	增高垫	6
32	9050012	12" BRUSH	12" 洗地刷	2
33	8126032	SPACER, IDLER	台阶轴	3
34	8126031	PULLEY, IDLER	惰轮	3
35	1437040	RING, RETAINING, 40	孔用弹性挡圈, 40	3
36	8126003	HUB, DRIVE, 3LUG, 6GRV	多楔带轮, 刷盘座	1
37	8111023	WARNING LABEL	转动警告贴纸	1
38	1021820	HEX BOLT M8×20	六角头螺栓 M8×20	3
39	1123810	LOCK NUT M8	防松螺母 M8	1
40	8126012	BRACKET, WALL-ROLLER	防撞轮安装支架	1
41	8119004	FITTING, PLASTIC, TEE	三通接头	1
42	1962016	CLAMP, 10-16mm	不锈钢喉箍 10-16mm	1
43	1914300	TIE, NYLON, 5X300	尼龙扎带 5×300	2
44	8116009	PROTECTIVE WHEEL	防撞轮	1
45	8115404	SLEEVE, P/M	含油轴承	1
46	1421824	FLAT WASHER M8× ϕ 24×2.0	普通平垫圈 M8× ϕ 24×2.0	1
47	1021825	HEX BOLT M8×25	六角头螺栓 M8×25	1
48	8126202	PIN	销	1
49	8126205	GUIDE, M14X20	导向套	1
50	1421428	FLAT WASHER M14× ϕ 28×2.0	平垫圈 M14× ϕ 28×2.0	1
51	1121913	NUT M14	六角螺母 M14	1
52	8116204	SPRING	压缩弹簧	1
53	8116210	KNOB M6	把手 M6	1

SCRUB HEAD LIFT GROUP / 刷盘提升组件 (i20NB / i20NBT)

PARTS LIST / 零件清单

SCRUB HEAD LIFT GROUP / 刷盘提升组件 (i20NB / i20NBT)

DIA NO.	PART NUMBER	DESCRIPTION	零件名称	NO REQ'D
1	8137006	NON-SLIP MAT	防滑垫	1
2	8137100	BRACKET, SCRUB HEAD LIFT	刷盘提升支架	1
3	8133151	BUMPER	减震器	1
4	1123810	LOCK NUT M8	防松螺母 M8	5
5	1021830	HEX BOLT M8×30	六角头螺栓 M8×30	2
6	1421824	FLAT WASHER M8× ϕ 24×2	平垫圈 M8× ϕ 24×2	6
7	8117007	NYLON WASHER ϕ 12.9× ϕ 24×2.5	尼龙垫圈 ϕ 12.9× ϕ 24×2.5	4
8	8115404	BEARING, JOURNAL	含油轴承	7
9	8115405	SLEEVE, P/M	含油轴承	2
10	1021825	HEX BOLT M8×25	六角头螺栓 M8×25	4
11	1422821	LOCK WASHER M8	弹簧垫圈 M8	4
12	1421816	FLAT WASHER M8× ϕ 16×1.6	普通平垫圈 M8× ϕ 16×1.6	4
13	8117002	LEFT BRACKET	左支架	1
14	8117005	SPACER(i20NB)	垫 (i20NB)	1
15	8117003	RIGHT BRACKET	右支架	1
16	1022860	HEX BOLT M8 ×60	六角头螺栓 M8 ×60	1
17	8117008	SPRING	压缩弹簧	1
18	8113109	BEARING, THRUST	含油轴承	2
19	1022845	HEX BOLT M8 ×45	六角头螺栓 M8 ×45	1
20	8117004	ROLLER	滚筒	1
21	1421612	FLAT WASHER M6× ϕ 12×1.6	普通平垫圈 M6× ϕ 12×1.6	2
22	1422616	LOCK WASHER M6	弹簧垫圈 M6	2
23	1021616	HEX BOLT M6 ×16	六角头螺栓 M6 ×16	2
24	8117009	SPRING	拉伸弹簧	1
25	8117001	BRACKET, GUIDE	导向架	1

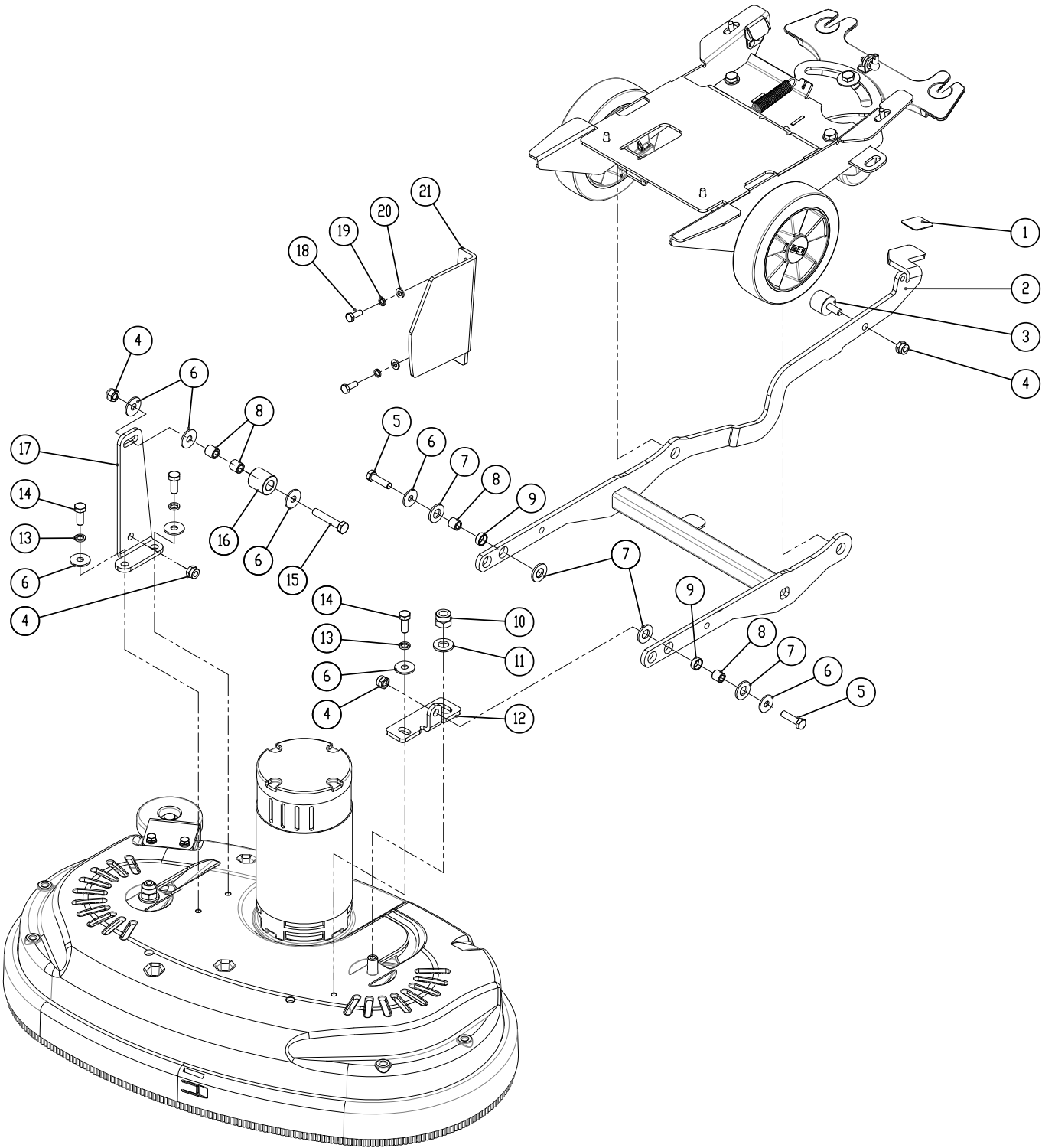
ORBITAL HEAD LIFT GROUP / 振动头提升组件 (i20NBT-OB)

PARTS LIST / 零件清单

ORBITAL HEAD LIFT GROUP / 振动头提升组件 (i20NBT-OB)

DIA NO.	PART NUMBER	DESCRIPTION	零件名称	NO REQ'D
1	8137006	NON-SLIP MAT	防滑垫	1
2	8137100	BRACKET, SCRUB HEAD LIFT	刷盘提升支架	1
3	8133151	BUMPER	减震器	1
4	1123810	LOCK NUT M8	防松螺母 M8	5
5	1021830	HEX HEAD BOLT M8×30	六角头螺栓 M8×30	2
6	1421824	FLAT WASHER M8× ϕ 24×2	平垫圈 M8× ϕ 24×2	8
7	8117007	NYLON WASHER ϕ 12.9× ϕ 24×2.5	尼龙垫圈 ϕ 12.9× ϕ 24×2.5	4
8	1435013	WAVE WASHER	波形垫圈	10
9	8115404	BEARING, JOURNAL	含油轴承	4
10	8115405	SLEEVE, P/M	含油轴承	2
11	1022845	HEX HEAD BOLT M8 ×45	六角头螺栓 M8×45	1
12	8117004	ROLLER	滚筒	1
13	1021616	HEX HEAD BOLT M6 ×16	六角头螺栓 M6 ×16	2
14	1422616	LOCK WASHER M6	弹簧垫圈 M6	2
15	1421612	FLAT WASHER M6× ϕ 12×1.6	普通平垫圈 M6× ϕ 12×1.6	2
16	8137010	BRACKET, GUIDE	导向架	1

SCRUB HEAD LIFT GROUP / 刷盘提升组件 (i24BT)

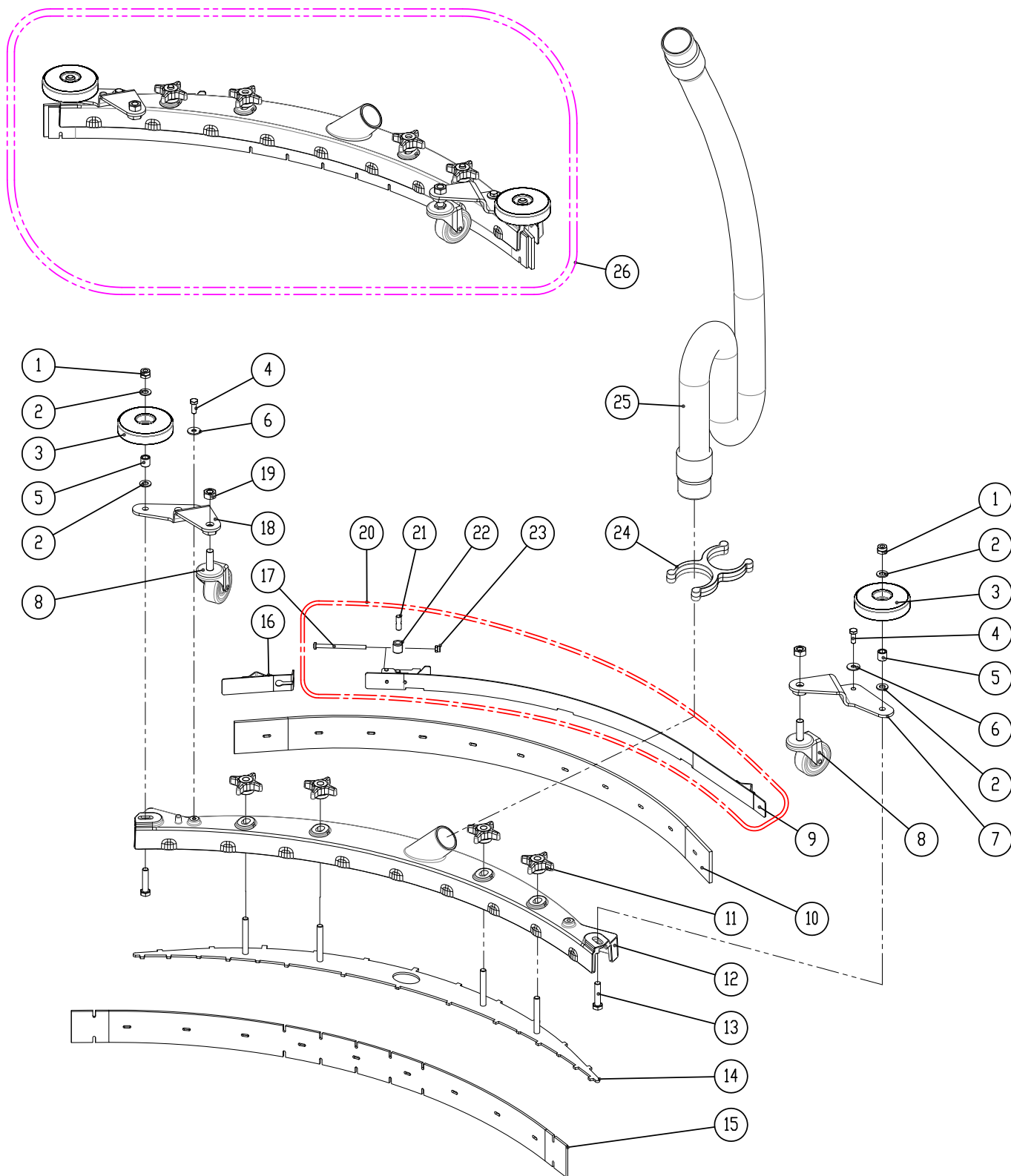


PARTS LIST / 零件清单

SCRUB HEAD LIFT GROUP / 刷盘提升组件 (i24BT)

DIA NO.	PART NUMBER	DESCRIPTION	零件名称	NO REQ'D
1	8137006	NON-SLIP MAT	防滑垫	1
2	8137100	BRACKET, SCRUB HEAD LIFT	刷盘提升支架	1
3	8133151	BUMPER	减震器	1
4	1123810	LOCK NUT M8	防松螺母 M8	5
5	1021830	HEX BOLT M8×30	六角头螺栓 M8×30	2
6	1421824	FLAT WASHER M8× ϕ 24×2	平垫圈 M8× ϕ 24×2	8
7	8117007	NYLON WASHER ϕ 12.9× ϕ 24×2.5	尼龙垫圈 ϕ 12.9× ϕ 24×2.5	4
8	8115404	BEARING, JOURNAL	含油轴承	4
9	8115405	SLEEVE, P/M	含油轴承	2
10	1123115	LOCK NUT M12	防松螺母 M12	1
11	1421124	FLAT WASHER M12× ϕ 24×2.5	平垫圈 M12× ϕ 24×2.5	1
12	8126011	LEFT BRACKET	左支架	1
13	1422821	LOCK WASHER M8	弹簧垫圈 M8	3
14	1021820	HEX BOLT M8×20	六角头螺栓 M8×20	3
15	1022845	HEX BOLT M8 ×45	六角头螺栓 M8 ×45	1
16	8117004	ROLLER	滚筒	1
17	8126010	RIGHT BRACKET	右支架	1
18	1021616	HEX BOLT M6 ×16	六角头螺栓 M6 ×16	2
19	1422616	LOCK WASHER M6	弹簧垫圈 M6	2
20	1421612	FLAT WASHER M6× ϕ 12×1.6	普通平垫圈 M6× ϕ 12×1.6	2
21	8137001	BRACKET, GUIDE	导向架	1

SQUEEGEE GROUP / 水刮组件

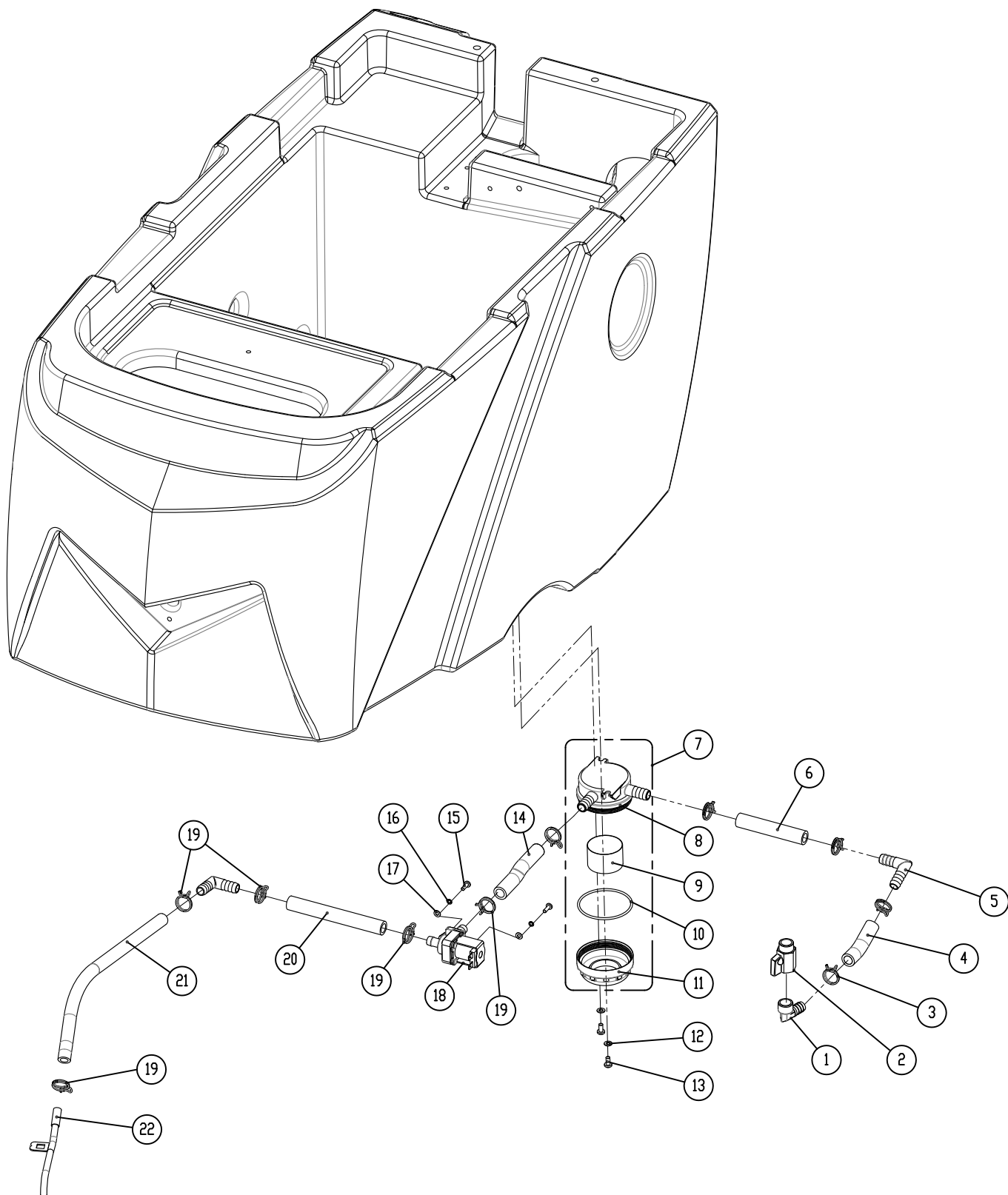


PARTS LIST / 零件清单

SQUEEGEE GROUP / 水刮组件

DIA NO.	PART NUMBER	DESCRIPTION	零件名称	NO REQ'D
1	1123810	LOCK NUT M8	防松螺母 M8	2
2	1421824	FLAT WASHER M8× ϕ 24×2.0	平垫圈 M8× ϕ 24×2.0	4
3	8116009	PROTECTIVE WHEEL	防撞轮	2
4	1021616	HEX BOLT M6×16	六角头螺栓 M6×16	2
5	8115404	BEARING, JOURNAL	含油轴承	2
6	1421612	FLAT WASHER M6× ϕ 12×1.6	平垫圈 M6× ϕ 12×1.6	2
7	8118300	RIGHT BRACKET	右支架	1
8	8118400	CASTER, 2 INCH	2" 万向轮	2
9	8118600	CLAMP ASSEMBLY, SQUEEGEE	夹条组件	1
10	8118022	SQUEEGEE BLADE, REAR, LINATEX	后刮条, LINATEX	1
	8118002	SQUEEGEE BLADE, REAR, PU (OPTIONAL)	后刮条, PU (选配)	1
11	8118003	STAR KNOB M8	星形把手 M8	4
12	8118004	SQUEEGEE HOUSING	水刮架	1
13	1021835	HEX BOLT M8×35	六角头螺栓 M8×35	2
14	8118005	RETAINER, SQUEEGEE	水刮保持架	1
15	8118021	SQUEEGEE BLADE, FRONT, LINATEX	前刮条, LINATEX	1
	8118001	SQUEEGEE BLADE, FRONT, PU (OPTIONAL)	前刮条, PU (选配)	1
16	8118610	SHORT CLAMP ASSEMBLY	短夹条	1
17	1221575	SCREW M5×75	十字槽盘头螺钉 M5×75	1
18	8118200	LEFT BRACKET	左支架	1
19	1121008	HEX NUT M10	六角螺母 M10	2
20	8118600A	CLAMP ASSEMBLY	长夹条组件	1
21	8118624	SPACER	塔扣转轴套	1
22	8118623	SHAFT	转轴	1
23	1123507	LOCK NUT M5	防松螺母 M5	1
24	8118109	HOLDER VACUUM HOSE	吸水管夹	1
25	8118006	VACUUM HOSE	吸水管组件	1
26	8118000	SQUEEGEE ASSEMBLY, LINATEX	水刮组件 (配 LINATEX 刮条)	1
	8118000-PU	SQUEEGEE ASSEMBLY, PU	水刮组件 (配 PU 刮条)	1

SOLUTION GROUP / 溶液系统组件



PARTS LIST / 零件清单

SOLUTION GROUP / 溶液系统组件

DIA NO.	PART NUMBER	DESCRIPTION	零件名称	NO REQ'D
1	8119007	ELBOW G1/2	直角接头 G1/2	1
2	8119005	BALL VALVE, G1/2	球阀 G1/2	1
3	8119006	CLAMP	水管夹 (小)	5
4	8119201	TUBING ID=12MM L=70MM	防冻溶液管 ID=12mm, L=70mm	1
5	8119002	ELBOW, TUBING BARB	90 度接头	2
6	8119202	TUBING ID=12MM L=100MM	防冻溶液管 ID=12mm, L=100mm	1
7	8119100	FILTER ASSEMBLY, 70 MESH	过滤器组件 (70 目)	1
	8119200	FILTER ASSEMBLY, 40 MESH	过滤器组件 (40 目)	1
8	8119101	BASE, FILTER ASSEMBLY	过滤器体	1
9	8119103	SCREEN, FILTER, 70 MESH	滤网, 70 目	1
	8119105	SCREEN, FILTER, 40 MESH (OPTIONAL)	滤网, 40 目 (选配)	1
10	1622760	O RING	O 形密封圈	1
11	8119102	CAP, FILTER ASSEMBLY	过滤器盖	1
12	1421510	FLAT WASHER M5× ϕ 10×1	平垫圈 M5× ϕ 10×1	2
13	1221512	SCREW M5×12	十字槽盘头螺钉 M5×12	2
14	8119202	TUBING ID=12MM L=100MM	防冻溶液管 ID=12mm, L=105mm	1
15	1221412	SCREW M4×12	十字槽盘头螺钉 M4×12	2
16	1422411	LOCK WASHER M4	弹簧垫圈 M4	2
17	1421409	FLAT WASHER M4× ϕ 9×0.8	普通平垫圈 M4× ϕ 9×0.8	2
18	8119003	SOLENOID VALVE, 24VDC	放水电磁阀, 24VDC	1
19	1962016	CLAMP, 10-16mm	不锈钢喉箍 10-16mm	5
20	8119203	TUBING ID=12MM L=135MM	防冻溶液管 ID=12mm, L=135mm	1
21	8119204	TUBING ID=10MM L=360MM	防冻溶液管 ID=10mm, L=360mm	1
22	8116100	WATER SUPPLY TUBE	进水管组件	1

WEAR AND TEAR PARTS / 易损件清单

DIA NO.	PART NUMBER	DESCRIPTION	零件名称	NO REQ'D
1	8115200	WHEEL, 8 INCH, i20NB	8" 运输轮, i20NB	2
	1612607	BEARING, BALL, 6004, 8"WHEEL	8" 运输轮用密封球轴承 6004	4
	8125200	WHEEL, 8 INCH, i20NBT / i24BT	8" 运输轮, i20NBT / i24BT	2
2	8116009	PROTECTIVE WHEEL	防撞轮	3
3	8118021	SQUEEGEE BLADE, FRONT, LINATEX	前刮条, LINATEX	1
4	8118022	SQUEEGEE BLADE, REAR, LINATEX	后刮条, LINATEX	1
5	9050020	20" BRUSH ,i20NB/NBT	20 "刷盘, i20NB/NBT	1
	9050020E	20" BRUSH ,i20NB/NBT (OPTIONAL)	20 "刷盘, i20NB/NBT (选配)	1
	9050012	12" BRUSH , i24BT	12 "刷盘, i24BT	2
6	9040019	19" PAD HOLDER, i20NB/NBT	19" 针座, i20NB/NBT	1
	9040019K	19" PAD HOLDER, i20NB/NBT (OPTIONAL)	19" 针座, i20NB/NBT (选配)	1
	9040011	11" PAD HOLDER, i24BT	11" 针座, i24BT	2
	9040011K	11" PAD HOLDER, i24BT (OPTIONAL)	11" 针座, i24BT (选配)	2
7	8146116	ISOLATORS, M10×25, i20NBT-OB	隔震垫, M10×25, i20NBT-OB	4
	8146107	ISOLATORS, M10×25, i20NBT-OB	隔震垫, M10×25, i20NBT-OB	4

安全预防

 **警告：在操作或使用本机器前，请仔细阅读并理解本操作手册。**

本机器仅作商业用途，并限于户内使用，敬请使用推荐的附件。

所有操作人员必须阅读、理解并掌握以下安全预防措施。

1. 请勿操作机器：

- 未经培训或取得相应的资格。
- 未认真阅读并理解本操作手册。
- 在易燃易爆的场所。
- 机器存在故障隐患而不适宜操作。
- 户外作业。

2. 操作本机前：

- 确保所有安全装置工作正常。

3. 使用机器时：

- 在斜坡和打滑的地面时请使用低速操作。
- 请遵照安全指引作业。
- 当机器后退时请特别小心。
- 转向时请放慢带度。
- 机器损坏或操作失灵时，请立即报告。
- 切勿让孩童在机器上或附近玩耍。
- 不要在超过 3 度的斜坡上作业。

4. 离开或维修机器之前：

- 将机器停放在平稳的地面上。
- 关闭机器电源并拔出钥匙开关钥匙。

5. 维修机器时：

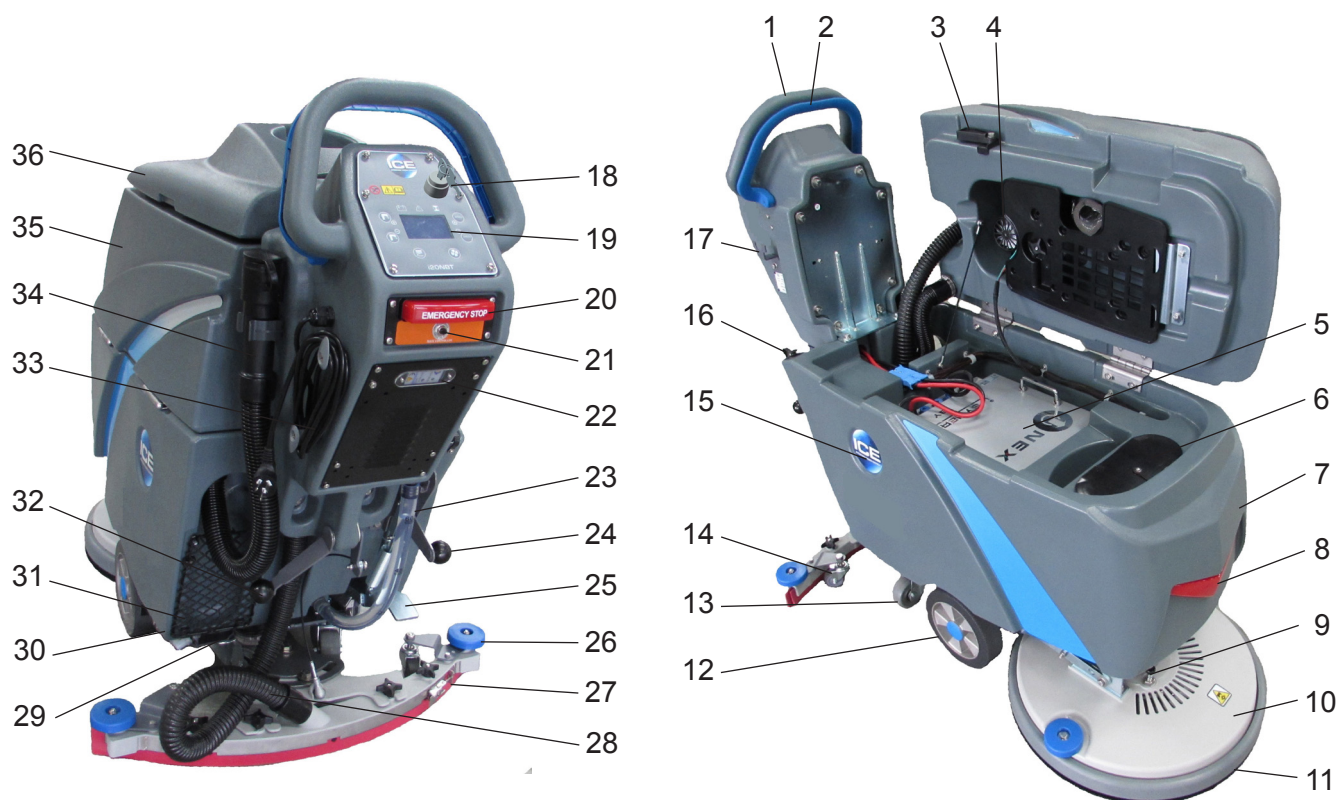
- 请仔细阅读本操作手册。
- 请使用原厂配件。
- 在轮子前放置挡块。
- 维修机器前，请先断开电池联接。
- 处理电池或电池接线时，请穿戴防护手套。
- 避免接触电池酸性物质。
- 避免移动零件。请勿穿着宽松的上衣、衬衫或手套。

 **警告：电池释放出氢气，并会导致燃烧和爆炸。请远离火花或开放式火源。充电时须保持电池舱开启。**

 **警告：易燃物质会导致燃烧和爆炸，请勿使用易燃性物体。**

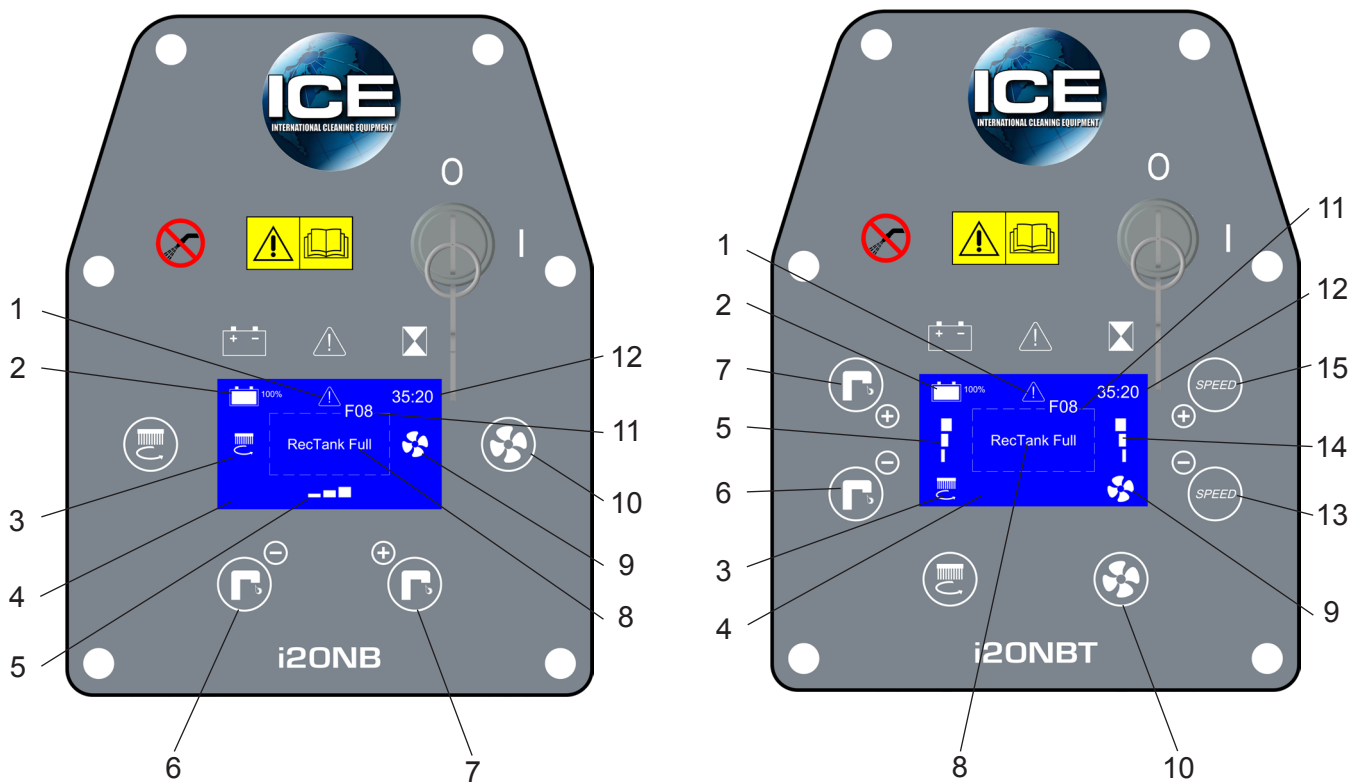
 **警告：请勿拾取易燃性物质或活性金属！**

机器组件



- | | |
|----------------|--------------------|
| 1. 控制箱手把 | 19. 控制面板（参见面板组件） |
| 2. 开关拉把 | 20. 急停开关按钮（带驱动轴机型） |
| 3. 污水箱支撑 | 21. 主控制器过载保护器 |
| 4. 吸力马达, 24VDC | 22. 车载充电器 / 充电观测窗口 |
| 5. 锂电池组件 | 23. 水位管 / 清水管 |
| 6. 桶注水口 / 清洁口 | 24. 刷盘加压拉把 |
| 7. 污水箱 | 25. 刷盘头提升踏板 |
| 8. LED 灯 | 26. 防撞轮 |
| 9. 上刷锁销（圆刷机型） | 27. 水刮组件 |
| 10. 刷盘组件 | 28. 放污管 |
| 11. 裙边 | 29. 过滤器组件 |
| 12. 8 寸运输轮 | 30. 90 度球阀 |
| 13. 3.15 寸万向轮 | 31. 储物网袋 |
| 14. 2 寸万向轮 | 32. 水刮提升拉把 |
| 15. ICE 标牌 | 33. 车载充电器电源线 |
| 16. 水管注水口 | 34. 放污管 |
| 17. 水刮储存架 | 35. 污水箱 |
| 18. 主电源钥匙开关 | 36. 污水箱盖 |

面板组件



1. 故障指示器
2. 锂电池电量表
3. 刷盘电机工作指示器
4. LED 显示屏
5. 清水流量指示器
6. 清水流量调节按钮 (-)
7. 清水流量调节按钮 (+)
8. 故障信息显示区

9. 吸水马达工作指示器
10. 吸力马达开关
11. 故障代码
12. 计时器
13. 速度调节按钮 (-)
14. 速度指示器
15. 速度调节按钮 (+)

机器调试与安装

拆开机器包装

请仔细检查机器包装上是否有破损的情形，如有破损应立即向运送货物的相关人员反映。

检查装箱清单，如有遗漏项目，请联络经销商。

- 机器
- 2 个 12V 电瓶
- 水刮组件
- 电瓶充电器
- 针座
- 洗地刷

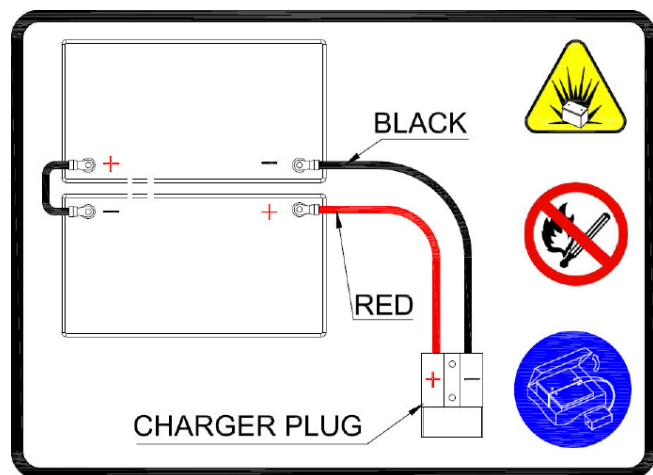
安装电瓶

警告：电池释放出氢气，并会导致燃烧和爆炸。请远离火花或开放式火源。充电时须保持电池舱开启。

1. 关闭机器。
2. 打开污水箱至足够装入电瓶的空间。
3. 小心将电瓶安装在电池盒内，将泡棉隔垫放入电瓶后部。

请勿将电瓶摔落到电瓶盒内，以免造成电瓶与机器的损坏！

4. 将电瓶连接线连接到电瓶的正负极，如下图所示。
红色接正极 (+)，黑色接负极 (-)。



机器调试

操作前检查

1. 检查外观是否清洁。
2. 检查电量表，确保电瓶已充满电。（参见电瓶充电章节）
3. 检查水刮是否正确安装。
4. 检查刷盘 / 针座是否正确安装。

刷盘或针座安装

1. 确保机器已关闭。
2. 踏下刷盘提升踏板（参见机器组件 #25），提升刷盘头离开地面。
3. 如果使用针座，请首先应将纤维垫放在针座上。
4. 转动刷盘座，到可以从刷盘罩窗口中看到刷盘座卡槽上的刷盘弹簧夹。
5. 安装刷盘或针座，将其三个定位轴卡入刷盘座上的卡槽内，转动刷盘或针座使其卡在弹簧夹内。按住上刷锁销（参见机器组件 #9）卡住刷盘座，将使安装刷盘或针座更容易。
6. 振动机 i20NBT-OB 使用 20 英寸的矩形针座，需将矩形纤维垫（20 英寸 / 508mm × 14 英寸 / 356mm）与针座前后对齐，并适当按压纤维垫并使紧贴在针座上。

安装水刮组件

1. 提起水刮提升拉把（参见机器组件 #32）。
2. 拧开水刮组件上中间的两个手把，置水刮组件于水刮托架槽内。
3. 连接吸水管到水刮组件上，并用吸水管夹将吸水管弯曲形成一个回水弯。
4. 检查刮条并做适当的调整。

清水箱注水

本机器有两个注水口：后方设有软管注水孔（参见机器组 #16）。打开污水箱可以看到清水箱上设有水桶注水孔（参见机器组件 #6）。**打开污水箱前请确保污水箱内污水已排空。**

用软管向清水箱内注水时，注意观察清水管，当水位到达“60L”位置时停止加水。如果是使用水桶注水，当水位到注水口下边缘时停止注水。注意：当使用水桶注水时，确保水桶是干净的。加水和排水时不要使用相同的水桶。

警告：勿倒易燃物到清水箱内，否则，会导致燃烧或爆炸。联系当地代理商，使用本机所推荐的清洁剂。

机器操作

未认真阅读和理解本操作手册，请勿操作本机。

1. 放下水刮提升把手（参见机器组件 #32），放下水刮组件至地面。
2. 释放刷盘提升踏板（参见机器组件 #25），放下刷盘头到地面。
3. 打开主电源钥匙开关（参见机器组件 #18）
4. 检查电量表（参见面板组件 #2），如果锂电池电量很低，LED 显示屏上将显示出相应的故障代码及故障信息（见故障代码章节），同时故障指示符将持续闪烁并伴随着警告声。请不要继续使用，应立即对锂电池进行充电。

5. 检查清水流量指示器（参见面板组件 #5），按清水流量调节按钮（参见面板组件 #6, 7），调节水量到合适的流量。

注意：只有拉动开关拉把后，清水才会流动。

6. 打开吸力泵开关（参见面板组件 #10）。
7. 手推式机型 i20NB：将开关拉把（参见机器组件 #2）向后拉，推动机器向前将开始清洁工作。
自走式机型 i20NBT/i24BT：将开关拉把（参见机器组件 #2）向后拉，机器将会自动向前推进开始工作，如果要后退，只需将开关拉把向前推。
自走式机型的速度可以调节，按速度调节按钮（参见面板组件 #13, 15），调节机器清洗速度至合适值。

注意：建议使用每分钟 45-60 米的清洗速度。

8. 清洗极度脏污的区域而需加强下刷压力时，只需提升刷盘加压拉把（参见机器组件 #44）到卡位即可。
9. 要停止清洁工作，请将开关拉把放开，提起刷盘及水刮组件。

机器操作过程中



警告：火灾或爆炸危险。请勿拾取易燃性材料或活性金属。

1. 在斜坡或打滑的地面作业时请低速操作。不要在超过 3 度的斜坡上作业。
2. 使机器持续行进以免损伤地面。
3. 若水刮组件吸水后在地面上留下拖痕，请用抹布擦拭刮条以去除垃圾。事先清扫清洗区域以避免产生拖痕。
4. 如果污水箱内泡沫过多，请将建议使用的消泡液倒入污水箱消泡。



警告：泡沫不能使浮球滤网内的浮球工作，请勿使泡沫进入污水箱中滤网浮球，以免损坏吸力马达。

注意观察电量显示表（参见面板组件 #2），当出现电量低的故障代码时，刷盘会停止运转，请停止清洁工作，对电池充电。



警告：锂电池电量过低时，请不要继续使用机器，否则会导致锂电池损坏。

5. 当清水箱内的清水用完之后，提升刷盘离开地面，保持水刮继续工作，直到污水全部吸取后，将污水箱内的污水排干（参见排水章节）。

过载保护器 / 保险

本机器配有 1 个可复位的过载保护器（参见机器组件 #21），用于保护主控制器。如果过载保护器动作，请先判断原因并让主控制器冷却，然后再以手动方式重新复位脱扣的过载保护器。
机器如需维修，请与授权的服务中心联系。

计时器

计时器（参见面板组件 #12）会记录刷子马达开机工作的总时数。请使用计时器来判定何时应执行建议的维护程序并记录维修历史。

水箱排水

1. 关闭机器电源。
2. 提升水刮组件和刷盘组件，推动机器至特定排水区排水。

污水箱排水

每次清洁工作完成后，或重新向清水箱加水前，污水箱内的污水应排干并清洗污水箱。



警告：当清水箱再次加满水时，如果污水箱未排水，泡沫或水可能会进入浮球装置里面损坏吸力泵。

1. 拿下放污管，拧下放污管堵头，放到排水桶或排水区地面开始排水。
2. 打开污水箱盖并用清水冲洗污水箱内部。
3. 清洗位于污水箱内的浮球滤网。

清水箱排水

每次清洁工作完成之后，清水箱应排水并清洁。

1. 拔下清水管（参见机器组件 #23），让清水箱内清水排出。
2. 拧开过滤器组件（参见机器组件 #29）的盖子，也可以排出清水箱内的清水。请检查过滤网是否干净，如果必要的话冲洗滤网。
3. 每次使用之后请用清水冲洗清水箱，以免溶液系统堵塞。清水箱排干后，重新插好清水管，确保过滤器滤网和 O 形密封圈正确安装后，拧紧过滤器盖。

电瓶充电



警告：火灾或爆炸危险。电瓶释放出氢气。请远离火花或开放式火源。充电时请保持电瓶仓开启。



仅能使用以下特定规格的充电器：

- 自动断路
- 深循环充电
- 输出电流 10-20 安培
- 输出电压 24 伏

1. 将充电器和机器置于良好通风处。
2. 关闭机器电源。
3. 如果是对湿电瓶充电，充电前请检查电池液面高度。
4. 将充电器交流电源线插入接地良好的电源插座上。
5. 充电时请支撑住污水箱以利通风。
6. 充电器自动开始充电，若电瓶充满，充电器会自动关闭。
7. 充电结束时，先拔掉接到交流电源上的插头，再将充电器从机器上拔掉。

维护和保养

警告： 机器维修前，请确认机器已关闭或拆除电瓶。

警告： 只能由授权的维修中心进行维修。任何由非授权的维修将不在保修之列。

每日维护与保养

1. 拆掉针座 / 刷盘，并用特定清洁剂擦拭干净。
2. 排干污水箱和清水箱内的水，并用清水冲洗干净。检查污水箱内有无碎片，如有请立即清除。
3. 提升水刮离开地面，用湿毛巾擦拭刮条。
4. 拆下浮球滤网装置用清水冲洗。
5. 用特定的清洁剂将本机擦拭干净。
6. 将电瓶充电。
7. 检查刮条边缘是否锋利，如有破损，请掉转使用或更换。

每月维护与保养

1. 检查电瓶顶部是否清洁以防止腐蚀。
2. 检查电瓶连接线是否松脱或腐蚀。
3. 检查污水箱盖密封条，如有破损请更换。
4. 用特定的润滑油润滑所有的润滑部位和转轴。
5. 检查机器紧固件是否松脱。
6. 检查水箱是否漏水。

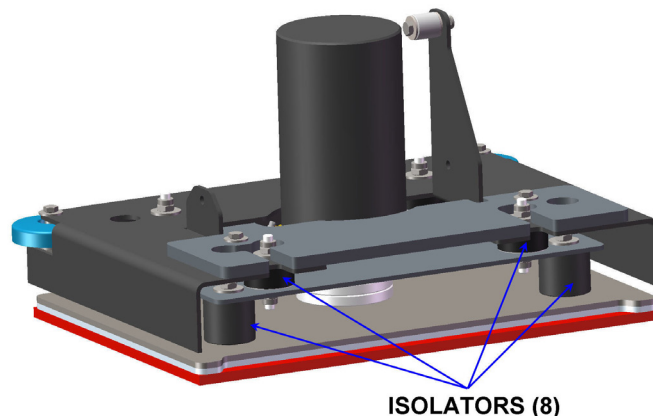
电机保养

1. 电机保养请联系当地代理商。
2. 每使用 250 小时之后，应检查电机碳刷。若碳刷磨损严重，请联系代理商更换。

振动头保养

振动机 i20NBT-0B，每使用 300 小时之后，应全面检查振动头上的 8 个隔震垫。

1. 目测检查振动头上的 8 个隔震垫的使用情况，8 个隔震垫的位置如下图所示，振动头的前部及后部各有 4 个。



2. 如果任何一个隔震垫已磨损或损坏，请联系当地代理商，更换所有的隔震垫。

电瓶保养

警告： 火灾或爆炸危险。电瓶释放出氢气。请远离火花或开放式火源。充电时请保持电瓶仓开启。

警告： 对电瓶进行保养时，请戴防护手套，避免与电瓶酸性物质接触。

注意： 为使本机保持良好的性能，应使电瓶任何时候都是可充电，勿使电瓶长时间处于放电状态。

1. 请遵照本手册中电瓶充电章节进行保养。
2. 电瓶顶端和电极须防腐蚀，可用苏打水防腐蚀，但不得将此溶液进入电池内。
3. 用沾有苏打水的刷子对电瓶和电瓶接线部分进行擦拭。
4. 检查电瓶连线是否磨损和接触件是否有松脱，必要时请更换。

本机储存

1. 储存于室内。
2. 将机器存放在干燥的场所。
3. 直立存放。
4. 提升针座或刷盘离开地面。
5. 提升水刮组件离开地面。
6. 若存放场所极度寒冷，在存放机器前需要将机器保持完全干燥。任何因过低温度造成的损坏不予保修。
7. 排干污水箱。
8. 排干清水箱。

故障代码 及 解决方法

本机器的控制面板，配有 LED 显示屏（参见面板组件 #4），LED 显示屏会显示机器的使用时间（参见面板组件 #12）及锂电池电量（参见面板组件 #2）等信息。

当机器出现故障时，LED 显示屏上将会显示相关的故障代码（参见面板组件 #11）以及故障信息（参见面板组件 #8），同时故障指示器（参见面板组件 #1）将持续的闪烁，严重的故障会伴随着警告声。

一旦出现故障代码，应立即停止工作，并排除故障。关闭机器电源，排除所有故障后，重新启动机器，故障代码将消除。

如果故障代码频繁出现，或重启机器后，故障代码不能消除，请联系 ICE 代理商。

故障代码及解决方法，请参见下表。

故障代码	故障信息	机型		故障原因	解决方法
		i20NB	i20NBT i24BT		
F01	踩踏板，放下刷盘	●		刷盘头没有放到地面 安全开关损坏	松开开关拉把 放下刷盘头至地面
F04	吸水马达过载 重启！	●	●	吸水马达过载	关闭机器，等待片刻后，重启机器
F06	刷盘电机过载 重启！	●	●	刷盘电机过载	
F07	驱动电机过载 重启！		●	驱动电机过载	
F08	污水箱满	●	●	污水箱满了 或污水箱水位开关损坏	排空污水箱 或更换水位开关
F10	电池电量不足 请充电！	●	●	锂电池电量不足	充电
F11	电量严重不足 马上充电！	●	●	锂电池电量严重不足	马上充电
F12	刹车线圈或电线故障		●	刹车线圈或电线故障	检查刹车线路 或更换刹车总成
F14	更换刹车总成		●	刹车总成损坏	更换刹车总成
F16	控制器温度过高 请等待！	●	●	主控制器温度过高	关闭机器，待控制器降温后，重启机器
F17	更换控制器	●	●	主控制器损坏	更换控制器总成
F21	检查吸水马达	●	●	吸水马达或电线故障	检查吸水马达及线路
F22	检查放水阀	●	●	放水电磁阀或电线故障	检查放水阀电线及连接器
F23	更换放水阀	●	●	放水电磁阀损坏	更换放水电磁阀
F24	检查驱动电机		●	驱动电机或电线故障	检查驱动电机及线路
F25	检查刷盘电机	●	●	刷盘电机或电线故障	检查刷盘电机及线路
F40	检查清洗面积感应器	●	●	清洗面积感应器损坏或感应 距离超过 5mm	检查感应器线路及连接器 或调整感应器位置
F41	松开手柄拉把	●	●	操作错误	松开开关拉把
F42	更换控制器总成	●	●	主控制器损坏	更换控制器总成
F43	松开急停按钮 重启！		●	急停开关被按下	松开急停开关按钮，重启机器
F44	更换控制器总成	●	●	主控制器损坏	更换控制器总成
F45	请退回控制器总成	●	●		
F46	请退回控制器总成	●	●		
F47	请退回控制器总成	●	●		
F48	请退回控制器总成	●	●		

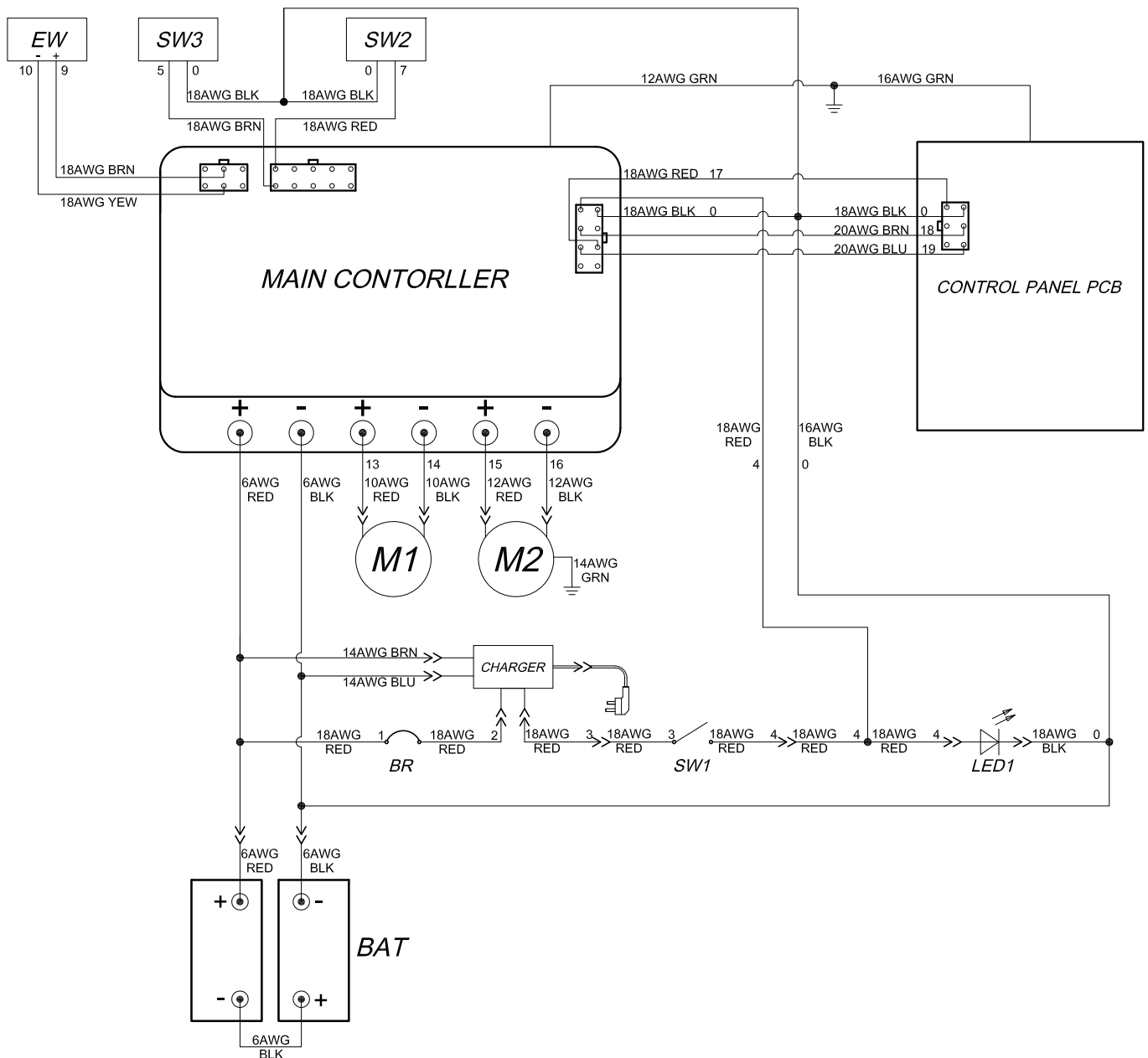
故障排除

故障	原因分析	解决办法
机器不能运行	没有拉开关拉把	向后拉动开关拉把
	电瓶电量不足需要充电	充电
	电瓶损坏	更换电瓶
	电瓶接线松脱	拧紧接线
	主控制器过载保护器动作	复位过载保护器
	电源钥匙开关损坏	联系 ICE 代理商
刷盘电机不能运行	刷盘组件被提升离开地面	放下刷盘组件到地面
	刷盘提升保护开关损坏	联系 ICE 代理商
	坏的开关拉把开关	联系 ICE 代理商
	刷盘电机损坏或其线路损坏	联系 ICE 代理商
	刷盘电机碳刷磨损严重	联系 ICE 代理商
机器不能自走 (自走机型)	驱动电机或其线路损坏	联系 ICE 代理商
	驱动电机碳刷磨损严重	联系 ICE 代理商
吸力泵不能运行	吸力泵或其线路损坏	联系 ICE 代理商
	吸力泵碳刷磨损严重	联系 ICE 代理商
溶液流量很少或没有	球阀开得太小或关闭	打开球阀
	流量开关调得太小或关闭	调整流量开关
	溶液软管或过滤器堵塞	用清水冲洗水管或过滤器滤网
	放水电磁阀堵塞	拆开放水电磁阀清洗
吸水性能差	污水箱满	排干污水箱
	放污管堵头松了	拧紧放污管堵头
	浮球滤网装置堵塞	冲洗浮球滤网
	水刮组件堵塞	清洗水刮组件
	水刮刮条磨损	调转使用或更换
	刮条位置不正确	调节刮条与地面的高度
	吸水管没有和水刮组件可靠连接	可靠连接吸水管
	吸水管堵塞	清除堵塞物
	吸水管损坏	更换吸水管
	污水箱盖没盖好	盖好
	污水箱盖密封条	更换密封条
	吸力泵损坏	联系 ICE 代理商
	电瓶电量低	充电
运行时间短	电瓶电量低	充电
	电瓶已损坏	更换电瓶
	电瓶需要保养	参见电瓶保养
	电瓶充电器损坏	维修或更换充电器
	刷盘压力太大	释放刷盘加压拉把

技术参数

机型	i20NB 手推式	i20NBT 自走式	i20NBT-OB 振动机	i24BT 双刷
整机尺寸 长 × 宽 × 高	1415 × 560 × 1140 毫米		1360 × 560 × 1140 毫米	1325 × 650 × 1140 毫米
机器重量	95 公斤	105 公斤		
机器重量 (装电瓶)	185 公斤	200 公斤		
污水箱容量	65 升 / 17.1 加仑			
清水箱容量	60 升 / 15.8 加仑			
水刮宽度	762 毫米 / 30 英寸			
清洁宽度	500 毫米 / 20 英寸 (圆刷)		500 毫米 / 20 英寸 (20 × 14 英寸针座)	600 毫米 / 24 英寸
工作效率 (理论值)	1800 平方米 / 小时	2200 平方米 / 小时		2600 平方米 / 小时
驱动方式	手推式 (刷盘助动)	驱动轴 24 伏 200 瓦		
最大驱动速度	不适用	75 米 / 分钟		
掉头最小通道宽度	1600 毫米			
刷子压力	最小 30 公斤 / 最大 45 公斤			
溶液流量	0 ~ 1.4 升 / 分钟			
刷盘电机	24 伏 550 瓦 220 转 / 分钟		24 伏 550 瓦 2200 转 / 分钟	24 伏 680 瓦 2000 转 / 分钟
控制箱手柄处振幅	不适用		<2.5m/s ²	不适用
吸力泵	24 伏 500 瓦			
吸力泵吸力	45 英寸			
电瓶	2 个 12 伏, 130AH@20 hr			
每次充电运行时间	3.5 小时	3 小时		
直流电压	24 伏			
噪音	68 分贝		<70 分贝	68 分贝
最大爬坡率	5% (3 度)			

WIRING DIAGRAM / 电路图 (i20NB)



BAT: 2-12V Batteries

BR: Main controller circuit breaker, 5A

CHARGER: On board battery charger

SW1: Main power key switch

LED1: Running lights

M1: Brush motor

M2: Vacuum motor

MAIN CONTROLLER: Main controller

CONTROL PANEL PCB: Control panel PCB

EW: Solution solenoid valve switch

SW3: Control handle start bail switch

SW2: Safe switch, Scrub head lifting

BAT: 2-12V 电瓶

BR: 主控制器过载保护器, 5A

CHARGER: 车载充电器

SW1: 主电源钥匙开关

LED1: 工作指示灯

M1: 刷盘电机

M2: 吸力泵

MAIN CONTROLLER: 主控制器

CONTROL PANEL PCB: 控制面板 PCB

EW: 放水电磁阀开关

SW3: 拉把开关

SW2: 刷盘提升安全开关

WIRING DIAGRAM/ 电路图 (i20NBT, i20NBT-OB & i24BT)

